

Mathematics 110 (Calculus I) Laboratory Manual

Department of Mathematics & Statistics
University of Regina

4th edition

by Douglas Farenick, Fotini Labropulu, Robert G. Petry

Published by the University of Regina Department of Mathematics and Statistics

4th Edition Copyright © 2016 Douglas Farenick, Fotini Labropulu, Robert G. Petry.

3rd Edition Copyright © 2015 Douglas Farenick, Fotini Labropulu, Robert G. Petry.

2nd Edition Copyright © 2014 Douglas Farenick, Fotini Labropulu, Robert G. Petry.

Permission is granted to copy, distribute and/or modify this document under the terms of the GNU Free Documentation License, Version 1.3 or any later version published by the Free Software Foundation; with no Invariant Sections, no Front-Cover Texts, and no Back-Cover Texts. A copy of the license is included in the section entitled “GNU Free Documentation License”.

Permission is granted to retain (if desired) the original title of this document on modified copies.

History

- 2nd Edition produced in 2014 entitled “Math 110 (Calculus I) Laboratory Manual” written by principal authors Douglas Farenick, Fotini Labropulu, and Robert G. Petry. Typeset in part by Kyler Johnson. Published by the University of Regina Department of Mathematics and Statistics.
- 3rd Edition produced in 2015 entitled “Math 110 (Calculus I) Laboratory Manual” written by principal authors Douglas Farenick, Fotini Labropulu, and Robert G. Petry. Typeset in part by Kyler Johnson. Published by the University of Regina Department of Mathematics and Statistics.
- 4th Edition produced in 2016 entitled “Math 110 (Calculus I) Laboratory Manual” written by principal authors Douglas Farenick, Fotini Labropulu, and Robert G. Petry. Typeset in part by Kyler Johnson. Published by the University of Regina Department of Mathematics and Statistics.

The source of this document (i.e. a transparent copy) is available via

<http://campioncollege.ca/contact-us/faculty-listing/dr-robert-petry>

Contents

Module 1. Equations and Functions	3
1.1 Solving Equations	3
1.2 Properties of Functions: Domains, Intercepts, Symmetry	3
1.3 Function Algebra	4
Review Exercises	6
Module 2. Limits	7
2.1 Secant and Tangent Lines	7
2.2 Calculating Limits Using Limit Laws	7
2.3 Trigonometric Limits	8
2.4 One-sided Limits	8
2.5 Infinite Limits and Vertical Asymptotes	9
2.6 Continuity	9
Review Exercises	11
Module 3. Differentiation	13
3.1 Average and Instantaneous Rate of Change	13
3.2 Definition of Derivative	14
3.3 Derivative Function	14
3.4 Differentiation Rules: Power, Sums, Constant Multiple	15
3.5 Rates of Change	15
3.6 Differentiation Rules: Products and Quotients	16
3.7 Parallel, Perpendicular, and Normal Lines	16
3.8 Differentiation Rules: General Power Rule	16
3.9 Differentiation Rules: Trigonometric Functions	16
3.10 Differentiation Rules: Chain Rule	18
3.11 Differentiation Rules: Implicit Differentiation	18
3.12 Differentiation Using All Methods	19
3.13 Higher Derivatives	19
3.14 Related Rates	19
3.15 Differentials	20
Review Exercises	21
Module 4. Derivative Applications	23
4.1 Relative and Absolute Extreme Values	23
4.2 Rolle's Theorem and the Mean Value Theorem	24
4.3 First Derivative Test	25
4.4 Inflection Points	25
4.5 Second Derivative Test	26
4.6 Curve Sketching I	26
4.7 Limits at Infinity and Horizontal Asymptotes	26
4.8 Slant Asymptotes	27

4.9 Curve Sketching II	27
4.10 Optimization Problems	28
Review Exercises	31
Module 5. Integration	33
5.1 Antiderivatives	33
5.2 Series	34
5.3 Area Under a Curve	34
5.4 The Definite Integral	35
5.5 Fundamental Theorem of Calculus (Derivative Form)	36
5.6 Fundamental Theorem of Calculus (Antiderivative Form)	37
5.7 Indefinite Integrals	37
5.8 The Substitution Rule	38
5.9 Integration Using All Methods	38
5.10 Area Between Curves	39
5.11 Distances and Net Change	39
Review Exercises	40
Answers	42
GNU Free Documentation License	69

Introduction

“One does not learn how to swim by reading a book about swimming,” as surely everyone agrees. The same is true of mathematics. One does not learn mathematics by only reading a textbook and listening to lectures. Rather, one learns mathematics by doing mathematics.

This Laboratory Manual is a set of problems that are representative of the types of problems that students of Mathematics 110 (Calculus I) at the University of Regina are expected to be able to solve on quizzes, midterm exams, and final exams. In the weekly lab of your section of Math 110 you will work on selected problems from this manual under the guidance of the laboratory instructor, thereby giving you the opportunity to do mathematics with a coach close at hand. These problems are not homework and your work on these problems will not be graded. However, by working on these problems during the lab periods, and outside the lab periods if you wish, you will gain useful experience in working with the central ideas of elementary calculus.

The material in the Lab Manual does not replace the textbook. There are no explanations or short reviews of the topics under study. Thus, you should refer to the relevant sections of your textbook and your class notes when using the Lab Manual. These problems are not sufficient practice to master calculus, and so you should solidify your understanding of the material by working through problems given to you by your professor or that you yourself find in the textbook.

To succeed in calculus it is imperative that you attend the lectures and labs, read the relevant sections of the textbook carefully, and work on the problems in the textbook and laboratory manual. Through practice you will learn, and by learning you will succeed in achieving your academic goals. We wish you good luck in your studies of calculus.

Module 1

Equations and Functions

1.1 Solving Equations

1-10: Solve the given equations.

1. $x^2 - 6x + 9 = 0$

2. $2x^2 - 5x - 3 = 0$

3. $4x^2 + 3x + 1 = 0$

4. $x^3 - 2x - 4 = 0$

5. $x^3 - 4x^2 - 4x + 16 = 0$

6. $x^3 + 4x - 5 = 0$

7. $2x^4 - 3x^2 = 0$

8. $x^4 - 3x^2 + 2 = 0$

9. $3x^5 - 2x^3 + 3x^2 - 2 = 0$

10. $2x^5 + 5x^4 - 3x^2 = 0$

Answers:
Page 42

1.2 Properties of Functions: Domains, Intercepts, Symmetry

1-16: Find the domain and the x - and y -intercepts (if there are any) of the given functions.

1. $f(x) = x^3$

2. $h(x) = \sqrt{x-6}$

3. $f(x) = x^2 + 4x + 4$

4. $g(x) = x^4 + 4x^3 - 5x^2$

5. $f(x) = \frac{1}{x-1}$

6. $h(x) = \frac{1}{x^2 + 4x + 4}$

7. $p(x) = \sqrt{4-x^2}$

8. $f(x) = 3x^2 + 5x + 2$

9. $g(x) = x^3 + 3x - 4$

10. $h(x) = \frac{x+5}{x+7}$

11. $f(x) = \frac{10}{2x^2 - 5x - 3}$

12. $g(x) = \sqrt{4-x}$

13. $p(x) = \sqrt{x^2 - 10}$

14. $h(x) = \sqrt{\frac{x+6}{2x-3}}$

15. $f(x) = \frac{\sqrt{x^2 - 10}}{x^2 + 10}$

16. $f(x) = \frac{1}{\sqrt{x+2}} - \frac{1}{x}$

Answers:
Page 42

17-32: Determine whether each of the given functions is even, odd or neither.

17. $f(x) = 3x^2$

26. $g(t) = 4t^3 + t$

18. $g(x) = 2x^3$

27. $h(z) = z^5 + 1$

19. $h(x) = 3x^2 + 2x^3$

28. $f(t) = \sqrt{t^2 + 5}$

20. $f(t) = -6t^3$

29. $g(x) = \frac{x}{x^4 + 3}$

21. $g(u) = u^3 - u^2$

30. $h(u) = \frac{3 + u^2}{u + 1}$

22. $f(x) = x^3 + x^5$

31. $p(x) = \frac{x^5}{x^3 + x}$

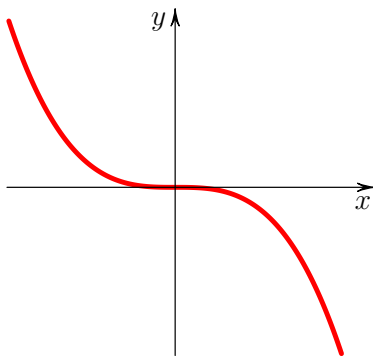
23. $f(x) = \sqrt{4 - x^2}$

24. $h(x) = \frac{x^2 + 1}{\sqrt{4 - x^2}}$

32. $u(s) = \sqrt{\frac{s^6 + 4}{s^{10} + 7}}$

25. $f(x) = 5x^2 + 3$

33. Here is a graph of a function f :



(a) Sketch the graph of $-f(x)$.

(d) Sketch the graph of $f(x) + 1$.

(b) Sketch the graph of $f(-x)$.

(e) Is f even, odd, or neither?

(c) Sketch the graph of $f(x + 1)$.

1.3 Function Algebra

1. Suppose that $f(x) = \frac{1}{x+2}$. Determine:

(a) $f(x+2)$

(b) $f(f(x))$

2-5: Find the composite functions $f \circ g$ and $g \circ f$ and their domains for the given functions.

2. $f(x) = 2x^3$, $g(x) = \sqrt{x^2 + 3}$.

3. $f(x) = 3x^2 + 6x + 4$, $g(x) = 3x - 2$

4. $f(z) = \sqrt{z^2 + 5}$, $g(z) = \frac{z}{z + 1}$

5. $f(x) = \frac{2x + 5}{x - 4}$, $g(x) = x^2 + 3$

6. Find two functions $f(x)$ and $g(x)$ such that $f(g(x)) = \sqrt{x^2 + 1} - 3$.

7. Use function composition to solve the equation $(x^2 - 5)^2 + 7x^2 - 23 = 0$. (Hint: Note the equation can be rewritten as $(x^2 - 5)^2 + 7(x^2 - 5) + 12 = 0$.)

Module 1 Review Exercises

1-5: Solve the given equations.

Answers:
Page 44

1. $2x^2 + 3x - 2 = 0$

2. $x^2 + x - 20 = 0$

3. $x^3 + 2x^2 - x - 2 = 0$

4. $x^4 - 5x^2 + 4 = 0$

5. $x^5 - 4x^3 - x^2 + 4 = 0$

6-9: Find the domain and the x - and y -intercepts of the given functions.

6. $h(x) = \frac{2x - 3}{5x + 4}$

7. $f(x) = \sqrt{2x^2 - 8}$

8. $g(x) = \sqrt{\frac{2x + 1}{x + 5}}$

9. $p(x) = \frac{\sqrt{x + 8}}{x - 3}$

10-13: Determine whether each of the given functions is even, odd or neither.

10. $f(x) = \frac{x^4 + 3}{x^2 + 1}$

11. $g(t) = t^{2/3}$

12. $h(z) = z\sqrt{z^2 + 1}$

13. $g(x) = \frac{x^3}{x^6 + 5} - x$

14-16: Find the composite functions $f \circ g$ and $g \circ f$ and their domains.

14. $f(x) = x^3 + 6, g(x) = x^{2/3}$

15. $f(t) = \frac{2t + 5}{t - 4}, g(t) = t^2 + 3$

16. $f(x) = \sqrt{x - 1}, g(x) = \frac{x + 5}{x + 3}$

Module 2

Limits

2.1 Secant and Tangent Lines

1. Consider the curve described by the function $y = x^3 + x^2 - 2x + 3$.
 - (a) Show that the points $(-1, 5)$ and $(0, 3)$ lie on the curve.
 - (b) Determine the slope of the secant line passing through the points $(0, 3)$ and $(-1, 5)$.
 - (c) Let Q be the arbitrary point $(x, x^3 + x^2 - 2x + 3)$ on the curve. Find the slope of the secant line passing through Q and $(-1, 5)$.
 - (d) Use your answer in (c) to determine the slope of the tangent line to the curve at the point $(-1, 5)$.

Answers:
Page 45

2.2 Calculating Limits Using Limit Laws

1-15: Evaluate the following limits.

1. $\lim_{x \rightarrow 3} \frac{x^2 + 4}{x + 2}$
2. $\lim_{x \rightarrow -2} \frac{x^2 + 4x + 4}{x + 2}$
3. $\lim_{x \rightarrow 0} \frac{2 - \sqrt{4 - x}}{x}$
4. $\lim_{x \rightarrow 3} |x - 3|$
5. $\lim_{x \rightarrow -2} \frac{x^2 - 3x - 10}{x^2 - 4}$
6. $\lim_{x \rightarrow 3} \frac{\frac{1}{x} - \frac{1}{3}}{x - 3}$
7. $\lim_{t \rightarrow 1} \frac{t - \sqrt{t}}{\sqrt{t} - 1}$
8. $\lim_{x \rightarrow 1} \frac{x^3 - 2x + 1}{x - 1}$
9. $\lim_{t \rightarrow 4} \frac{\sqrt{t} - 2}{t - 4}$
10. $\lim_{y \rightarrow 3} \frac{2 - \sqrt{y^2 - 5}}{y^2 - y - 6}$
11. $\lim_{x \rightarrow -4} \frac{(x + 1)^2 - 9}{x + 4}$
12. $\lim_{u \rightarrow -5} \frac{\frac{1}{u} + \frac{1}{5}}{u + 5}$
13. $\lim_{t \rightarrow 2} \frac{t^2 + t - 6}{\frac{2}{t} - 1}$
14. $\lim_{x \rightarrow 4} \frac{x^3 - 4x^2 - 4x + 16}{x - 4}$
15. $\lim_{t \rightarrow 1} \frac{t^3 + 4t - 5}{t^3 - 1}$

Answers:
Page 45

2.3 Trigonometric Limits

1-11: Evaluate the trigonometric limits.

Answers:
Page 45

1. $\lim_{\theta \rightarrow 0} \frac{\theta}{\sin \theta}$

7. $\lim_{x \rightarrow \pi} \frac{\cos x}{x}$

2. $\lim_{\theta \rightarrow 0} \theta \cot \theta$

8. $\lim_{\theta \rightarrow \frac{\pi}{4}} \frac{\tan \theta}{\theta}$

3. $\lim_{x \rightarrow 0} \frac{1 - \cos x}{\sin x}$

9. $\lim_{t \rightarrow \frac{\pi}{2}} \frac{\sin t - 1}{\cos t}$

4. $\lim_{\theta \rightarrow 0} \frac{7\theta}{\sin 5\theta}$

10. $\lim_{x \rightarrow 0} \frac{\tan x}{x}$

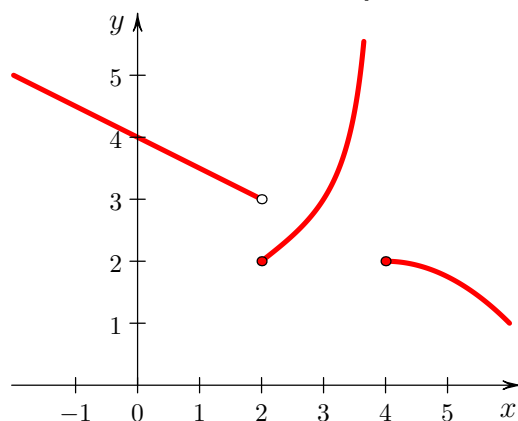
5. $\lim_{\theta \rightarrow 0} \frac{7\theta}{\cos 5\theta}$

11. $\lim_{\theta \rightarrow \pi} \frac{\cos \theta + 1}{\sin^2 \theta}$

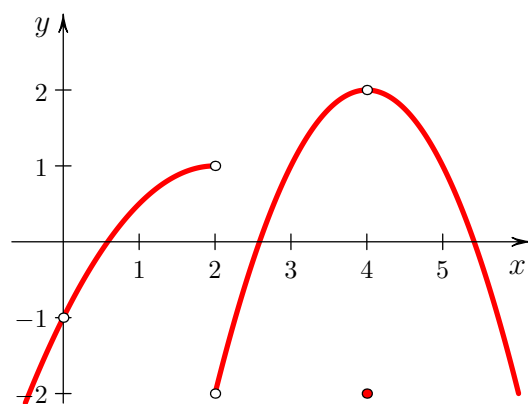
2.4 One-sided Limits

1. Find the one-sided limits of f at the values $x = 0$, $x = 2$ and $x = 4$.

Answers:
Page 45



2. Find the one-sided and two-sided limits of f at the values $x = 0$, $x = 2$ and $x = 4$.



3. Suppose $f(x) = \begin{cases} \frac{4}{x+4} & \text{if } x < 2 \\ x^2 + 1 & \text{if } x \geq 2 \end{cases}$.

Find $\lim_{x \rightarrow 2^-} f(x)$, $\lim_{x \rightarrow 2^+} f(x)$, and $\lim_{x \rightarrow 2} f(x)$, if they exist.

4. Suppose $f(x) = \begin{cases} x^2 + 2cx & \text{if } x \leq -1 \\ x + 5c & \text{if } x > -1 \end{cases}$.

Find all values for the constant c that make the two-sided limit exist at $x = -1$.

2.5 Infinite Limits and Vertical Asymptotes

1-4: Determine the following limits. For any limit that does not exist, identify if it has an infinite trend (∞ or $-\infty$).

Answers:

Page 46

1. $\lim_{x \rightarrow 2^+} \frac{5x + 4}{2x - 4}$

3. $\lim_{x \rightarrow 5} \frac{x^2 - 4x - 5}{x^2 - 3x - 10}$

2. $\lim_{x \rightarrow 3^-} \frac{x^2 + 2x}{x^2 - 5x + 6}$

4. $\lim_{x \rightarrow 0} \frac{\sec x}{x^2}$

5-12: Find the vertical asymptotes of the following functions.

5. $f(x) = \frac{3x + 3}{2x - 4}$

9. $f(x) = \frac{\cos x}{x}$

6. $f(x) = x^3 + 5x + 2$

10. $y = \frac{5x^2 - 3x + 1}{x^2 - 16}$

7. $g(t) = \frac{\sqrt{t^2 + 3}}{t - 2}$

11. $f(x) = \frac{x^3 + 1}{x^3 + x^2}$

8. $f(x) = \frac{x^2 - 2x + 1}{2x^2 - 2x - 12}$

12. $F(x) = \frac{x}{\sqrt{4x^2 + 1}}$

2.6 Continuity

1. Define precisely what is meant by the statement “ f is continuous at $x = a$ ”.

2-7: Use the continuity definition to determine if the function is continuous at the given value. If the function is discontinuous there, decide whether it is a removable, jump, or infinite discontinuity.

Answers:

Page 46

2. $f(x) = x^3 + 5x + 1$, at $x = 2$

3. $g(t) = \frac{t + 1}{t^2 + 4}$, at $t = -1$

4. $h(y) = \frac{y^2 + 4y + 4}{y + 2}$, at $y = -2$

5. $p(s) = \sqrt{s} - 4$, at $s = 2$

6. $f(x) = \begin{cases} x^2 + 1, & \text{if } x \leq 1 \\ \frac{x+1}{x-1}, & \text{if } x > 1 \end{cases}$, at $x = 1$

7. $g(t) = \begin{cases} 2t + 3, & \text{if } t \leq 2 \\ \frac{t^2 - 5t + 6}{t - 2}, & \text{if } t > 2 \end{cases}$, at $t = 2$

8. Let c be a constant real number and f be the function

$$f(x) = \begin{cases} \sqrt{-x} + 1 & \text{if } x < 0 \\ x^2 + c^2 & \text{if } x \geq 0 \end{cases}$$

(a) Explain why, for $c = -2$, the function f is discontinuous at $x = 0$.

(b) Determine all real numbers c for which f is continuous at $x = 0$.

9. Where is the function $f(x) = \frac{x^2 + 3x + 2}{x^2 - 1}$ continuous?

10. Using the Intermediate Value Theorem, show there is a real number c strictly between 1 and 3 such that $c^3 + 2c^2 = 10$.

11. Show that the equation $x^2 + \cos x - 2 = 0$ has a solution in the interval $(0, 2)$.

Module 2 Review Exercises

1-5: Evaluate the limits.

1. $\lim_{x \rightarrow 3} \frac{2x^2 - 5x - 3}{x^2 + x - 12}$

2. $\lim_{t \rightarrow 4} \frac{\sqrt{t} - 2}{t^2 - 2t - 8}$

3. $\lim_{x \rightarrow -1} \frac{x^3 + x^2 + 2x + 2}{x^2 - 2x - 3}$

4. $\lim_{t \rightarrow -2} \frac{\sqrt{10 + 3t} - 2}{3t^2 + 4t - 4}$

5. $\lim_{t \rightarrow 2} \frac{\frac{8}{t} - 4}{3t^2 - 4t - 4}$

6-9: Evaluate the trigonometric limits.

6. $\lim_{x \rightarrow 0} \frac{\sin(4x)}{\sin(5x)}$

7. $\lim_{\theta \rightarrow 0} \frac{\sin(3\theta)}{\tan(4\theta)}$

8. $\lim_{t \rightarrow \pi} \frac{2\sin^2 t}{1 + \cos t}$

9. $\lim_{x \rightarrow 0} \frac{\cos(3x) + \cos(4x) - 2}{x}$

10-12: Determine whether the functions are continuous at the given value.

10. $f(x) = \frac{x+3}{\sqrt{x^2+5}}$ at $x = -1$

11. $h(t) = \frac{t^2 + 2t - 1}{t - 3}$ at $t = 3$

12. $g(x) = \begin{cases} 3x^2 - 1, & \text{if } x \leq 2 \\ \frac{x^2 + x - 6}{x - 2}, & \text{if } x > 2 \end{cases}$ at $x = 2$

Answers:
Page 47

Module 3

Differentiation

3.1 Average and Instantaneous Rate of Change

1. Consider the function $f(x) = x^3 + x + 2$.
 - (a) Find the slope of the secant line through points $(2, 12)$ and $(1, 4)$ on the graph of f .
 - (b) From your graph, estimate the slope of the tangent line to the curve at the point $(2, 12)$. Next, numerically estimate the tangent slope by calculating the secant slope between the point $(2, 12)$ and a point with x value near 2.
 - (c) What is the equation of the tangent line at $(2, 12)$? (Use your estimate from (b) for the slope.)
2. After t seconds, a toy car moving along a straight track has position $s(t)$ measured from a fixed point of reference given by $s(t) = t^3 + 2t^2 + 1$ cm.
 - (a) How far is the car initially from the reference point?
 - (b) How far from the reference point is the car after 2 seconds?
 - (c) What is the average velocity of the car during its first 2 seconds of motion?
 - (d) By calculator, estimate the instantaneous velocity of the car at time $t = 2$ by computing the average velocities over small time intervals near $t = 2$.
3. One mole of an ideal gas at a fixed temperature of 273 K has a volume V that is inversely proportional to the pressure P (Boyle's Law) given by

$$V = \frac{22.4}{P},$$

where V is in litres (L) and P is in atmospheres (atm).

- (a) What is the average rate of change of V with respect to P as pressure varies from 1 atm to 3 atm?
- (b) Use a calculator to estimate the instantaneous rate of change in the volume when the pressure is 3 atm by computing the average rates of change over small intervals lying to the left and right of $P = 3$ atm.

Answers:
Page 47

3.2 Definition of Derivative

1-2: Use the definition of the derivative at a value a to find the following.

Answers:
Page 47

1. $f'(2)$ if $f(x) = \frac{1}{x+1}$

2. $g'(4)$ if $g(x) = \sqrt{2x}$

3-8: Use the definition of the derivative to calculate $f'(x)$ for each of the following functions.

3. $f(x) = x^2 + 3$

6. $f(x) = \sqrt{x+2}$

4. $f(x) = \frac{1}{3x}$

7. $f(x) = \frac{3x+2}{x+1}$

5. $f(x) = (x+2)^2$

8. $f(x) = \frac{1}{\sqrt{x}}$

9. Prove that $f(x) = \sqrt{(x-2)^2}$ is not differentiable at $x = 2$ by showing that the following left and right hand limits differ:

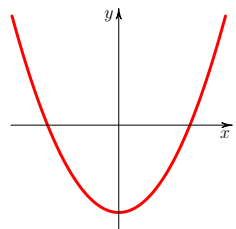
$$\lim_{h \rightarrow 0^-} \frac{f(2+h) - f(2)}{h} \neq \lim_{h \rightarrow 0^+} \frac{f(2+h) - f(2)}{h}.$$

3.3 Derivative Function

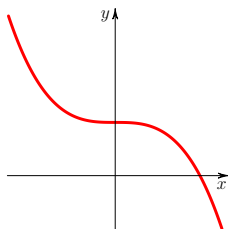
1. Which of the following graphs represent functions that are differentiable at $x = 0$? (Explain why or why not).

Answers:
Page 48

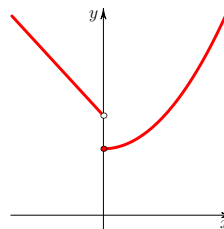
(a)



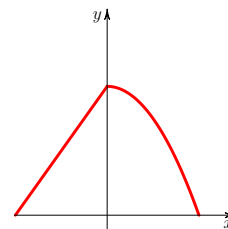
(b)



(c)



(d)



3.4 Differentiation Rules: Power, Sums, Constant Multiple

1-8: Differentiate the following functions involving powers, sums and constant multiplication. (Any value that is not the function variable should be considered a constant.)

Answers:
Page 48

1. $f(x) = \sqrt{x} - x^{12}$

6. $f(x) = \sqrt{3x} + \sqrt[5]{\frac{x}{3}}$

2. $g(x) = \frac{1}{\sqrt{x^5}}$

(Hint: $\sqrt[n]{xy} = (\sqrt[n]{x})(\sqrt[n]{y})$ and $\sqrt[n]{\frac{x}{y}} = \frac{\sqrt[n]{x}}{\sqrt[n]{y}}$.)

3. $y = \frac{4x^3}{5}$

7. $f(x) = \sin(\pi/15)x^{2a}$

4. $f(u) = u^{-4} + u^4$; Also find $f'(1)$.

5. $f(x) = (x^3 + x)^2$ (Hint: Expand first.)

8. $s(t) = -\frac{g}{2}t^2 + v_0t + s_0$

9. Calculate the instantaneous rates of change given in problems 1(b), 2(d), and 3(b) of Section 3.1 directly using the derivative.

10. Find the equation of the tangent line to the curve $y = x + \sqrt{x}$ at the point $P(1, 2)$.

11. Find the value(s) of x for which the curve $y = 2x^3 - 4x^2 + 5$ has a horizontal tangent line.

3.5 Rates of Change

1-2: The following problems consider the meaning of the derivative as a rate of change.

Answers:
Page 48

1. The concentration of carbon dioxide in the Earth's atmosphere has been observed at Mauna Loa Observatory in Hawaii to be steadily increasing (neglecting seasonal oscillations) since 1958. A best fit curve to the data measurements taken from 1982 to 2009 yields the following function for the concentration in parts per million (ppm) as a function of the year t :

$$C(t) = 0.0143(t - 1982)^2 + 1.28(t - 1982) + 341$$

- (a) What was the level of CO_2 in the air in the year 2000?
 (b) At what rate was the CO_2 level changing with respect to time in the year 2000?
 (c) By what percentage did the CO_2 level change between 2000 and 2005?
2. A conical tank has a height of 5 metres and radius at the top of 2 metres.

(a) Show that the volume of liquid in the tank when it is filled to a depth y is given by

$$V = \frac{4\pi}{75}y^3$$

- (b) What is the rate of change of volume with respect to depth when the tank is filled to 4 metres?

3.6 Differentiation Rules: Products and Quotients

1-8: Differentiate the following functions involving products and quotients. (Any value that is not the function variable should be considered a constant.)

Answers:
Page 49

$$1. f(x) = (x^4 - 3x^2 + 2) \left(x^{\frac{1}{3}} - x \right)$$

$$5. f(\theta) = \frac{\theta^2 + 3\theta - 4}{\theta^2 - 7}$$

$$2. h(x) = (x^3 + \pi x + 2) \left(2 + \frac{1}{x^3} \right)$$

$$6. g(x) = \frac{1 + x^2}{\sqrt{x}} ; \text{ Also find } g'(4) .$$

$$3. y = (x^2 - 1) (x^3 + 2) (2x^2 + \sqrt{x})$$

$$7. f(v) = \frac{(2v + 3)(v + 4/v)}{v^2 + v}$$

$$4. f(x) = \frac{x - 4}{x - 6}$$

$$8. h(x) = cx^2 + (3\sqrt{x} + 2) (2x^2 + x)$$

3.7 Parallel, Perpendicular, and Normal Lines

1. Find the line through the point $P(2, 1)$ that is parallel to the tangent to the curve $y = 3x^2 + 2x + 1$ at the point $Q(1, 6)$.

2. Find the normal line to the curve $y = \sqrt{x} + x^2$ at the point $P(1, 2)$.

3. Find any points on the curve $y = x^3 - 4$ with normal line having slope $-\frac{1}{12}$.

Answers:
Page 49

3.8 Differentiation Rules: General Power Rule

1-6: Differentiate the following functions requiring use of the General Power Rule. (Any value that is not the function variable should be considered a constant.)

Answers:
Page 49

$$1. f(x) = (x^2 + 3)^9$$

$$4. y = \left(\frac{4x + 3}{x^2 + x} \right)^{-\frac{1}{7}}$$

$$2. g(x) = \frac{1}{x + \sqrt{x}}$$

$$5. h(x) = \sqrt[3]{5x^n + 4c}$$

$$3. f(t) = \frac{7}{\sqrt{2t^2 + 3t + 4}}$$

$$6. f(x) = \left[(2x + \sqrt{x})^4 + 3x \right]^5$$

3.9 Differentiation Rules: Trigonometric Functions

1. Find the derivative $f'(x)$ of $f(x) = \sin 4x$ using the definition of the derivative.

2-5: Differentiate the following functions involving trigonometric functions.

Answers:
Page 50

$$2. f(x) = x^2 \cos x$$

$$4. H(\theta) = \csc \theta \cot \theta ; \text{ Also find } \left. \frac{dH}{d\theta} \right|_{\theta=\pi/3} .$$

$$3. f(t) = \frac{t^3}{\sin t + \tan t}$$

$$5. f(x) = (\sin x + \cos x)(\sec x - \cot x)$$

6. Calculate $\frac{df}{d\theta}$ for the function $f(\theta) = \sin^2 \theta + \cos^2 \theta$

(a) Directly by using the rules of differentiation.

(b) By first simplifying f with a trigonometric identity and then differentiating.

7-8: For each curve and point P ,

(a) Confirm the point P lies on the curve. (b) Find the equation of the tangent line at P .

7. $y = x \tan x$ at point $P\left(\frac{\pi}{4}, \frac{\pi}{4}\right)$

8. $y = 5x + 3 \sin(2x) - 2 \cos(3x)$ at point $P(0, -2)$.

3.10 Differentiation Rules: Chain Rule

1-13: Differentiate the following functions requiring use of the Chain Rule. (Any value that is not the function variable should be considered a constant.)

Answers:
Page 50

1. $f(x) = (x^8 - 3x^4 + 2)^{12}$
2. $g(x) = \sqrt{3x^2 + 2}$; Also find $g'(2)$.
3. $f(\theta) = \sin(\theta^2)$
4. $h(\theta) = \cot^2 \theta$
5. $f(x) = \sec [(x^3 + 3)(\sqrt{x} + x)]$
6. $y = 4 \cos \sqrt[3]{x}$
7. $f(x) = \frac{1}{3 + \sin^2 x}$
8. $y = (\csc x + 2)^5 + x^2 + x$
9. $y = \pi \tan \theta + \tan(\pi \theta)$
10. $g(x) = \left(\sqrt{x + \sqrt{x}} \right) (x^4 - 1)^7$
11. $f(x) = \left(\frac{x - 3}{x + 1} \right)^3$
12. $A(t) = \cos(\omega t + \phi)$; Also find $\left. \frac{dA}{dt} \right|_{t=0}$.
13. $f(x) = \sin [\cos (x^2 + x)]$

14. Find the value(s) of θ for which the curve $f(\theta) = \cos^2 \theta - \sin \theta$ has a horizontal tangent line.

3.11 Differentiation Rules: Implicit Differentiation

1-6: Calculate y' for functions $y = y(x)$ defined implicitly by the following equations. (Any value that is not x or y should be considered a constant.)

Answers:
Page 51

1. $x^2 + y^2 = 3x$
2. $xy^2 - 2x^3y + x^3 = 1$; Also find $\left. \frac{dy}{dx} \right|_{(x,y)=(1,2)}$.
3. $\frac{x^2}{a^2} + \frac{y^2}{b^2} = 1$
4. $\sin(xy) = y$
5. $\cos(x + y) + x^2 = \sin y$
6. $\frac{\sec y}{x} = \sin x$

7. Consider the curve generated by the relation $x^{\frac{2}{3}} + y^{\frac{2}{3}} = 4$.
- (a) Confirm that the point $P(-1, 3\sqrt{3})$ lies on the curve.
 - (b) Find the equation of the tangent line to the curve at the point P .

3.12 Differentiation Using All Methods

1-12: Differentiate the following functions using any appropriate rules.

1. $f(x) = 4x^5 + 3x^2 + x + 4$

7. $y = \sqrt[4]{x^3 + 2x + 5}$

2. $y = x^8 + \frac{2}{x^3} - \sqrt{x} + \frac{4}{\sqrt{x}} + 10$

8. $f(\theta) = \cos 3\theta + \sin^2 \theta$

3. $g(t) = \sqrt[3]{t^2} + t^4 + \frac{6}{t^2}$

9. $g(x) = \tan(x^2 + 1) \cos(x)$

4. $f(x) = \frac{x+5}{\sqrt{x}}$

10. $y = \sqrt[4]{(\sin t + 5)^3}$

5. $g(x) = (\sqrt{x} + 3x + 1)(x + \pi)$

11. $f(x) = \sqrt[3]{\frac{x^4 + 5x - 1}{x^2 - 3}}$

6. $h(y) = \frac{(y+4)^3}{y+5}$

12. $x^3y^4 + y^2 = xy + 6$

Answers:
Page 51

3.13 Higher Derivatives

1-4: Calculate the second derivative for each of the following functions.

1. $f(x) = \cot x$

3. $y = x^3 \sec x$

2. $f(x) = (x-2)^{10}$; Also find $f''(3)$.

4. $x^2 - y^2 = 16$ (Use implicit differentiation.)

Answers:
Page 52

5-6: When one uses derivatives, their simplification becomes important.

5. Show that $f''(x) = \frac{32(3x^2 + 16)}{(x^2 - 16)^3}$ for $f(x) = \frac{x^2}{x^2 - 16}$.

6. Show that $f''(x) = \frac{8x+8}{(x-2)^4}$ for $f(x) = \frac{x^2}{x^2 - 4x + 4}$.

3.14 Related Rates

1-7: Solve the following problems involving related rates.

1. An oil spill spreads in a circle whose area is increasing at a constant rate of 10 square kilometres per hour. How fast is the radius of the spill increasing when the area is 18 square kilometres?
2. A spherical balloon is being filled with water at a constant rate of $3 \text{ cm}^3/\text{s}$. How fast is the diameter of the balloon changing when it is 5 cm in diameter?
3. An observer who is 3 km from a launchpad watches a rocket that is rising vertically. At a certain point in time the observer measures the angle between the ground and her line of sight of the rocket to be $\pi/3$ radians. If at that moment the angle is increasing at a rate of $1/8$ radians per second, how fast is the rocket rising when she made the measurement?

Answers:
Page 52

4. A water reservoir in the shape of a cone has height 20 metres and radius 6 metres at the top. Water flows into the tank at a rate of $15 \text{ m}^3/\text{min}$, how fast is the level of the water increasing when the water is 10 m deep? Hint: Use similar triangles.
 5. At 8 a.m., a car is 50 km west of a truck. The car is traveling south at 50 km/h and the truck is traveling east at 40 km/h. How fast is the distance between the car and the truck changing at noon?
 6. A boy is walking away from a 15-metres high building at a rate of 1 m/sec . When the boy is 20 metres from the building, what is the rate of change of his distance from the top of the building?
 7. The hypotenuse of a right angle triangle has a constant length of 13 cm. The vertical leg of the triangle increases at the rate of 3 cm/sec. What is the rate of change of the horizontal leg, when the vertical leg is 5 cm long?
-

3.15 Differentials

1-2: Find the volume V and the absolute error ΔV of the following objects.

1. A cubical cardboard box with side length measurement of $l = 5.0 \pm 0.2 \text{ cm}$.
 2. A spherical cannonball with measured radius of $r = 6.0 \pm 0.5 \text{ cm}$.
-

3-4: Find the linear approximation (linearization) $L(x)$ of the function at the given value of x .

3. $f(x) = \sqrt{2x^3 - 7}$ at x -value $a = 2$.
 4. $f(x) = \tan(x)$ at x -value $a = \pi/4$.
-

Module 3 Review Exercises

1-3: For each function calculate $f'(x)$ using the definition of the derivative.

1. $f(x) = x^3 + 2$

2. $f(x) = \frac{4x - 3}{x + 2}$

3. $f(x) = \sqrt{2x + 1}$

Answers:
Page 53

4-10: Differentiate the functions.

4. $y = 3x^4 + \sqrt[3]{2x} - \frac{5}{\sqrt{x}} + \pi$

5. $g(x) = (\sqrt{2x} - 4x + 3)(3x + \sin x)$

6. $h(y) = \frac{\sqrt{y+5}}{3y+2}$

7. $f(\theta) = \cos^2 \theta + 4 \cos(\theta^2)$

8. $g(x) = \sec(x^3 + 4) \cos(2x)$

9. $f(x) = \sqrt[5]{\frac{x^3 - 4x + 10}{4x^2 + 5}}$

10. $x^4 y^3 + 4y^2 = xy + \sin y$

11. Find the equation of the tangent line to the curve $y = 3 \sin x - 2 \cos(3x)$ at the point $P(\frac{\pi}{2}, 3)$.

12. Find the value(s) of x for which the curve $y = \frac{x+1}{x^2+3}$ has a horizontal tangent line.

13. Find the value(s) of θ for which the curve $f(\theta) = \cos(2\theta) - 2 \cos \theta$ has a horizontal tangent line.

14. The height h and radius r of a circular cone are increasing at the rate of 3 cm/sec. How fast is the volume of the cone increasing when $h = 8$ cm and $r = 3$ cm?

15. A right triangle has a constant height of 30 cm. If the base of the right triangle is increasing at a rate of 6 cm/sec, how fast is the angle between the hypotenuse and the base changing when the base is 30 cm?

16. If the area of an equilateral triangle is increasing at a rate of 5 cm²/sec, find the rate at which the length of a side is changing when the area of the triangle is 100 cm³.

Module 4

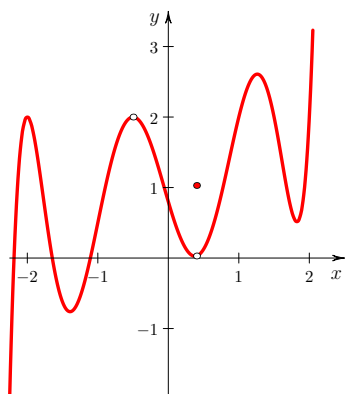
Derivative Applications

4.1 Relative and Absolute Extreme Values

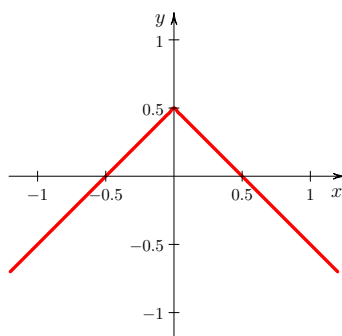
1. Identify the relative maxima, relative minima, absolute maxima, and absolute minima on each of the following graphs.

Answers:
Page 53

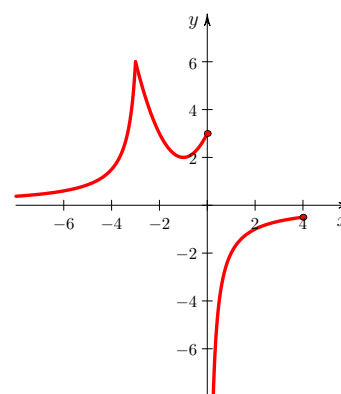
(a)



(b)



(c)



2-10: Find the critical numbers of the given function.

2. $f(x) = x^3 - 9x^2 + 24x - 15$

7. $H(x) = \frac{x+3}{x-5}$

3. $h(x) = |x| + 1$

8. $f(t) = \sqrt{t^2 - 4}$

4. $f(s) = \frac{s}{s^2 + 6}$ on the interval $[0, 10]$.

9. $g(x) = \sqrt[3]{x^2 - 5}$

5. $f(x) = x^3 + 5x^2 + 3x + 1$

10. $F(\theta) = 2 \sin(\theta) - \theta$

6. $g(t) = \frac{1}{4}t^4 + 2t^2 - 5t + 6$

11-15: Find the absolute maximum and absolute minimum values and their locations for the given function on the closed interval.

11. $f(x) = x^4 - x^2 + 1$ on $[-2, 2]$

12. $f(x) = x^3 + 5x^2 + 3x + 1$ on $[-1, 0]$.
 13. $g(t) = \sqrt{t}(t - 2)$ on $[0, 1]$.
 14. $H(x) = x^{\frac{1}{3}} - 3$ on $[-1, 8]$.
 15. $f(x) = \sin x \cos x$ on $[0, 2\pi]$
-

4.2 Rolle's Theorem and the Mean Value Theorem

Answers:
Page 54

1. Using Rolle's Theorem, show that the graph of $f(x) = x^3 - 2x^2 - 7x - 2$ has a horizontal tangent line at a point with x -coordinate between -1 and 4 . Next find the value $x = c$ guaranteed by the theorem at which this occurs.
2. By Rolle's Theorem it follows that if f is a function defined on $[0, 1]$ with the following properties:
 - (a) f is continuous on $[0, 1]$
 - (b) f is differentiable on $(0, 1)$
 - (c) $f(0) = f(1)$then there exists a least one value c in $(0, 1)$ with $f'(c) = 0$. Show that each condition is required for the conclusion to follow by giving a counterexample in the case that (a), (b), or (c) is not required.
3. Suppose that f is continuous on $[-3, 4]$, differentiable on $(-3, 4)$, and that $f(-3) = 5$ and $f(4) = -2$. Show there is a c in $(-3, 4)$ with $f'(c) = -1$.
4. Verify the Mean Value Theorem for the function $f(x) = x^3 + 2x - 2$ on the interval $[-1, 2]$.

4.3 First Derivative Test

1-5: Find the open intervals upon which the following functions are increasing or decreasing. Also find any relative minima and maxima and their locations.

Answers:
Page 55

1. $f(x) = x^2 + 2x + 1$

4. $f(x) = |x|$

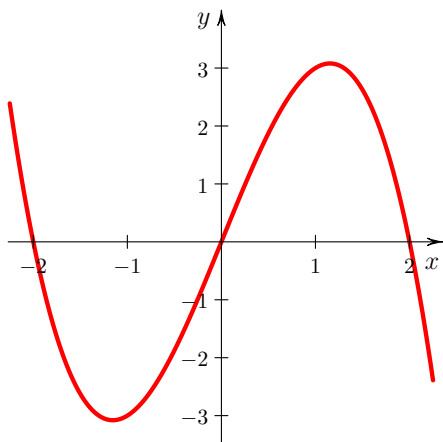
2. $f(x) = \frac{x^2 - 3x + 1}{x - 1}$

5. $f(x) = \begin{cases} |x| & \text{if } x \neq 0 \\ 2 & \text{if } x = 0 \end{cases}$

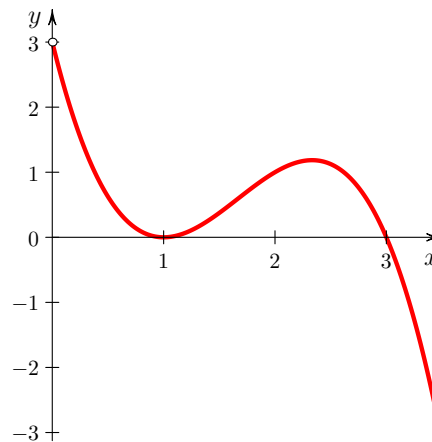
3. $f(x) = 4 \cos x - 2x$ on $[0, 2\pi]$

6-7: Each graph below is a graph of the derivative f' of a function f . In each case use the graph of f' to sketch a possible graph of f .

6.



7.



4.4 Inflection Points

1-2: Show that the following functions have no inflection points:

1. $f(x) = 2x^4$

2. $f(x) = \frac{1}{x}$

Answers:
Page 56

3. Find the relative extrema (and their locations), the intervals of concavity, and the inflection points of the function $f(x) = x^5 - 15x^3 + 1$.

4.5 Second Derivative Test

- 1-2: Determine the relative maxima and minima of the following functions and their locations. Use the Second Derivative Test.

Answers:
Page 56

1. $f(x) = x^3 - 12x + 1$
 2. $f(x) = \cos(2x) - 4\sin(x)$ on the interval $(-\pi, \pi)$
-

3. Can you use the Second Derivative Test to categorize the critical number $x = 0$ of the function $f(x) = \sin^4 x$? Explain why or why not.

4.6 Curve Sketching I

- 1-3: Find the domain, intercepts, intervals of increase and decrease, relative maxima and minima, intervals of concave upward and downward, and inflection points of the given functions and then sketch their graphs.

Answers:
Page 56

1. $f(x) = x^3 - 6x^2$
 2. $g(t) = t^{\frac{3}{2}} - 3t^{\frac{1}{2}}$
 3. $F(x) = \sqrt{x^2 + 9}$
-

4.7 Limits at Infinity and Horizontal Asymptotes

- 1-13: Determine the following limits. For any limit that does not exist, identify if it has an infinite trend (∞ or $-\infty$).

Answers:
Page 57

1. $\lim_{x \rightarrow -\infty} \frac{18x^2 - 3x}{3x^5 - 3x^2 + 2}$
 2. $\lim_{x \rightarrow \infty} \frac{x^2}{\sqrt{x^3 + 2}}$
 3. $\lim_{x \rightarrow -\infty} \frac{\sqrt{x^2 + 2x}}{6x + 3}$
 4. $\lim_{x \rightarrow \infty} \left[\sec\left(\frac{1}{x}\right) + 1 \right]$
 5. $\lim_{x \rightarrow -\infty} \sqrt{x^2 + 3x + 5} + x$
 6. $\lim_{x \rightarrow \infty} \frac{x^2 + 5x + 4}{3x^2 + 2}$
 7. $\lim_{x \rightarrow \infty} \frac{4x^5 - 3x^2 + 6}{x^4 + 7}$
 8. $\lim_{x \rightarrow \infty} \frac{3x^4 + 6x - 7}{x^5 + 10}$
 9. $\lim_{x \rightarrow \infty} \frac{\sqrt{x^2 + 10}}{x + 3}$
 10. $\lim_{x \rightarrow -\infty} \frac{\sqrt{2x^2 + 3}}{x - 2}$
 11. $\lim_{x \rightarrow -\infty} \frac{5x + \sqrt{x^2 + 1}}{x + 5}$
 12. $\lim_{x \rightarrow \infty} \left(\sqrt{x^2 + 4x + 1} - x \right)$
 13. $\lim_{x \rightarrow -\infty} \left(x + \sqrt{x^2 - 6x + 5} \right)$
-

14-21: Find the horizontal asymptotes of the following functions.

$$14. f(x) = \frac{3x+3}{2x-4}$$

$$18. f(x) = \frac{\cos x}{x}$$

$$15. f(x) = x^3 + 5x + 2$$

$$19. y = \frac{5x^2 - 3x + 1}{x^2 - 16}$$

$$16. g(t) = \frac{\sqrt{t^2+3}}{t-2}$$

$$20. f(x) = \frac{x^3+1}{x^3+x^2}$$

$$17. f(x) = \frac{x^2-2x+1}{2x^2-2x-12}$$

$$21. F(x) = \frac{x}{\sqrt{4x^2+1}}$$

4.8 Slant Asymptotes

1-3: Find any slant asymptotes of the graphs of the following functions.

$$1. f(x) = \frac{3x^2-4x}{x+2}$$

$$2. g(x) = \frac{x^3+2x+1}{x^4+5x-7}$$

$$3. y = \frac{x^3-2x^2+1}{x^2+2}$$

Answers:

Page 58

4.9 Curve Sketching II

1-3: Apply calculus techniques to identify all important features of the graph of each function and then sketch it.

$$1. f(x) = x^3 - 3x - 2$$

$$2. y = \frac{3x^2}{x^2-1}$$

$$3. f(x) = \frac{x^2}{x^2+2x+1}$$

Answers:

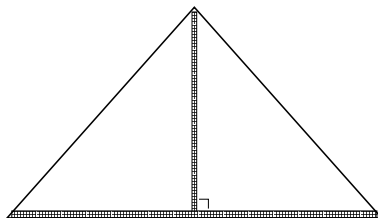
Page 58

4.10 Optimization Problems

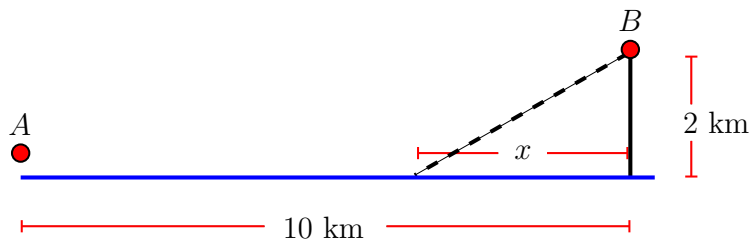
1-10: Solve the following optimization problems following the steps outlined in the text.

Answers:
Page 59

1. The entrance to a tent is in the shape of an isosceles triangle as shown below. Zippers run vertically along the middle of the triangle and horizontally along the bottom of it. If the designers of the tent want to have a total zipper length of 5 metres, find the dimensions of the tent that will maximize the area of the entrance. Also find this maximum area.

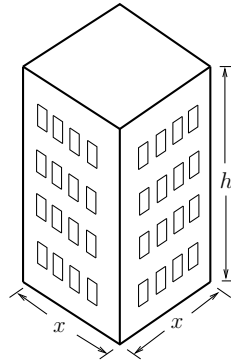


2. Find the point on the line $y = 2x + 2$ closest to the point $(3, 2)$ by
 - (a) Using optimization.
 - (b) Finding the intersection of the original line and a line perpendicular to it that goes through $(3, 2)$.
3. The product of two positive numbers is 50. Find the two numbers so that the sum of the first number and two times the second number is as small as possible.
4. A metal cylindrical can is to be constructed to hold 10 cm^3 of liquid. What is the height and the radius of the can that minimize the amount of material needed?
5. A pair of campers wish to travel from their campsite along the river (location A) to visit friends 10 km downstream staying in a cabin that is 2 km from the river (location B) as shown in the following diagram:

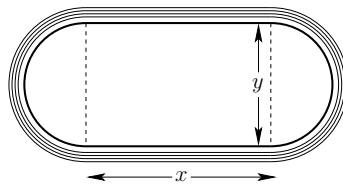


- (a) If the pair can travel at 8 km/h in the river downstream by canoe and 1 km/h carrying their canoe by land, at what distance x (see diagram) should they depart from the river to minimize the total time t it takes for their trip?
- (b) On the way back from the cabin they can only travel at 4 km/h in their canoe because they are travelling upstream. What distance x will minimize their travel time in this direction?
- (c) Using the symbolic constants a for the downstream distance, b for the perpendicular land distance, w for the water speed and v for the land speed, find a general expression for optimal distance x . Verify your results for parts (a) and (b) of this problem by substituting the appropriate constant values.

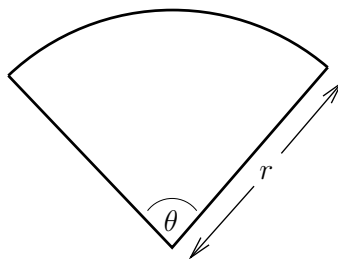
- (d) Does your general result from part (c) depend at all on the downstream distance a ? Discuss.
6. A construction company desires to build an apartment building in the shape of a rectangular parallelepiped (shown) with fixed volume of 32000 m^3 . The building is to have a square base. In order to minimise heat loss, the total above ground surface area (the area of the four sides and the roof) is to be minimised. Find the optimal dimensions (base length and height) of the building.



7. A rectangular field is to be enclosed and then divided into three equal parts using 32 metres of fencing. What are the dimensions of the field that maximize the total area?
8. Two power transmission lines travel in a parallel direction (north-south) 10 km apart. Each produces electromagnetic interference (EMI) with the one to the west producing twice the EMI of that of the one to the east due to the greater current the former carries. An amateur radio astronomer wishes to set up his telescope between the two power lines in such a way that the total electromagnetic interference at the location of the telescope is minimized. If the intensity of the interference from each line falls off as $1/\text{distance}$, how far should the telescope be positioned from the stronger transmission line?
9. An athletic field consists of a rectangular region with a semicircular region at each end. The perimeter of the entire athletic field has to be 400 metres. Find the dimensions that maximize the area of the rectangular region.



10. An antenna is to be created by bending a wire of length 16 cm into the shape of a sector of a circle as shown. In order to maximize the electric flux through the wire, the area of the sector is to be maximized. Find the dimensions r and θ that will maximize the area. Also find the maximum area.



Module 4 Review Exercises

1-3: Find the critical numbers of the given functions.

1. $f(x) = \frac{x+2}{x^2-3}$

2. $g(t) = \sqrt{t^2 - 3t}$

3. $F(\theta) = \cos(2\theta) + 2\sin \theta$

Answers:
Page 60

4-5: Find the absolute maximum and absolute minimum values and their locations for the given function on the closed interval.

4. $f(x) = \frac{x}{x^2 + 16}$ on the closed interval $[-1, 1]$.

5. $g(t) = t\sqrt{8 - t^2}$ on the closed interval $[0, 1]$.

6-7: Find the domain, intercepts, asymptotes, relative maxima and minima, intervals of increase and decrease, intervals of concave upward and downward, and inflections points. Then sketch the graph of the given functions.

6. $f(x) = 8x^{\frac{1}{3}} + x^{\frac{4}{3}}$

7. $g(x) = \frac{x^2}{x-2}$

8-11: Evaluate the given limits.

8. $\lim_{x \rightarrow \infty} \frac{3x^2 - 4x - 5}{2x^5 + 3}$

9. $\lim_{x \rightarrow -\infty} \frac{5x^4 - 3x + 1}{x^4 + 7}$

10. $\lim_{x \rightarrow -\infty} \frac{\sqrt{5x^2 - 4}}{2x + 1}$

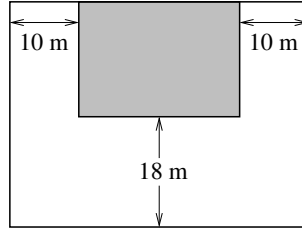
11. $\lim_{x \rightarrow -\infty} \left(2x + \sqrt{x^2 + 4x + 2} \right)$

12-13: Find the horizontal and vertical asymptotes of the given functions.

12. $y = \frac{2x^2 + 7x + 3}{x^2 + x - 6}$

13. $g(t) = \frac{\sqrt{9 + 4t^2}}{2t + 3}$

14. A store with a rectangular floorplan is to sit in the middle of one side of a larger rectangular lot with parking on three sides as shown.



- If the narrow strips of parking on the side are to be 10 m wide while the parking in the front is to be 18 m wide, find the optimal dimensions of the store that will minimize the total lot area if the store itself must have an area of 1000 m^2 . What is the total lot area in this case?
15. A farmer wants to enclose a rectangular garden on one side by a brick wall costing \$20/m and on the other three sides by a metal fence costing \$5/m. Find the dimensions of the garden that minimize the cost if the area of the garden is 250 m^2 .
16. A window shaped like a Roman arch consists of a rectangle surmounted by a semicircle. Find the dimensions of the window that will allow the maximum amount of light if the perimeter of the window is 10 m.

Module 5

Integration

5.1 Antiderivatives

1. Why are $F_1(x) = \frac{1}{4}x^4$ and $F_2(x) = \frac{1}{4}(x^4 + 2)$ both antiderivatives of $f(x) = x^3$?

Answers:
Page 62

2-6: Find the antiderivative of the given functions.

2. $f(x) = 3x^2 - 5x + 6$

3. $f(x) = \frac{x^3 + 4}{x^2}$

4. $g(t) = \sqrt{t} + \frac{2}{\sqrt{t}}$

5. $h(x) = \sqrt[3]{x^2} - 4x^6 + \pi$

6. $f(\theta) = 2 \cos \theta - \sin \theta + \sec^2 \theta$

7-9: Find the function(s) f satisfying the following.

7. $f''(x) = 2x^3 - 10x + 3$

8. $f''(t) = \sqrt{t} + 6t$, $f(1) = 1$, $f'(1) = 2$

9. $f''(\theta) = 3 \sin \theta + \cos \theta + 5$, $f(0) = 3$, $f'(0) = -1$

10. Suppose f is a function with $f'''(x) = 0$ for all x . Show that f has no points of inflection.

5.2 Series

1-4: Evaluate the following series. (Any value that is not an index being summed over should be treated as a positive integer constant.)

Answers:
Page 62

1. $\sum_{i=2}^5 \frac{i+2}{i-1}$

3. $\sum_{i=1}^n \frac{i^2+1}{n^3}$

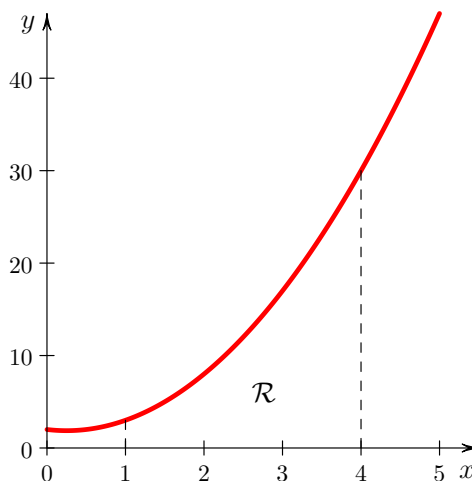
2. $\sum_{k=1}^4 6k$

4. $\sum_{i=1}^n i(i-3)$

5.3 Area Under a Curve

1. Let A be the area of the region \mathcal{R} bounded by the x -axis, the lines $x = 1$ and $x = 4$, and the curve $f(x) = 2x^2 - x + 2$ shown below:

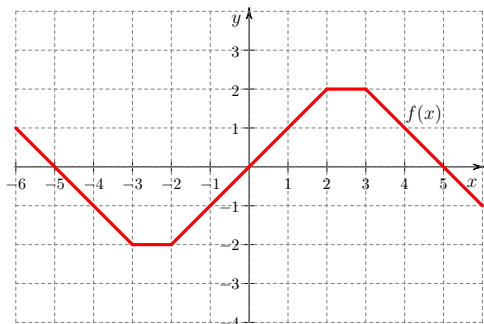
Answers:
Page 62



- Write a formula for the n^{th} sum S_n approximating A using right endpoints of the approximating rectangles.
- Use $A = \lim_{n \rightarrow \infty} S_n$ and your answer from (a) to calculate A .

5.4 The Definite Integral

1. Consider the following graphically defined function $f(x)$:



Answers:
Page 62

- (a) Using the interpretation of the definite integral in terms of net signed area between the function and the x -axis, find

i. $\int_{-5}^0 f(x) dx$

ii. $\int_{-2}^5 f(x) dx$

- (b) If we define the function $g(t) = \int_{-6}^t f(x) dx$, on what intervals is

i. $g(t)$ increasing?

ii. $g(t)$ decreasing?

2-5: Use the interpretation of the definite integral as the net signed area to find:

2. $\int_0^2 3x dx$

4. $\int_0^3 (2x - 4) dx$

3. $\int_{-1}^4 6 dx$

5. $\int_{-4}^3 (-x) dx$

6. Find $\int_{-r}^0 \sqrt{r^2 - x^2} dx$ by interpreting the integral as an area. Here $r > 0$ is a positive constant.

7. Simplify the following to a single definite integral using the properties of the definite integral.

$$\int_{-1}^7 f(x) dx + \int_3^{-1} f(x) dx + \int_7^9 f(x) dx$$

8-9: Use Riemann sums with right endpoint evaluation to evaluate the following definite integrals.

8. $\int_0^3 (x^3 + 1) dx$

9. $\int_0^b x^2 dx$ where $b > 0$ is constant

5.5 Fundamental Theorem of Calculus (Derivative Form)

1-4: Compute the derivatives of the following functions using the Fundamental Theorem of Calculus.

Answers:

Page 63

1. $F(x) = \int_0^x \sqrt{t^3 + 2t + 1} dt$

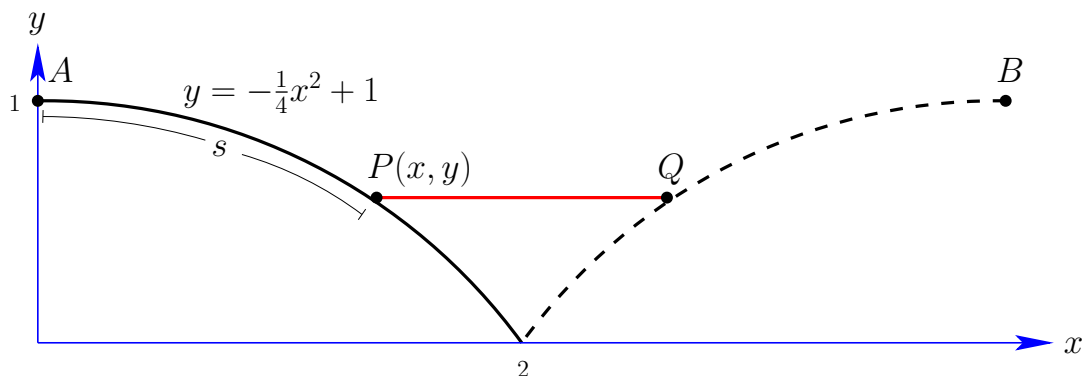
3. $g(x) = \int_x^1 [\cos(t^3)] dt$

2. $h(x) = \int_0^{x^4} \sqrt{t^3 + 2t + 1} dt$

4. $H(x) = \int_{2x}^{3x} \sqrt[3]{t^3 + 1} dt$

5. The *error function*, $\text{erf}(x)$, is defined by $\text{erf}(x) = \frac{2}{\sqrt{\pi}} \int_{-\infty}^x e^{-t^2} dt$ where e^u is the natural exponential function. If $f(x) = \text{erf}(x^3)$ find $f'(x)$.

6. The left-side of a symmetrical glacial river valley has an approximate parabolic shape described by the curve $y = -\frac{1}{4}x^2 + 1$ (in km) as shown.



Using calculus techniques the arc length s from point A at the top of the valley to the point $P(x, y)$ can be shown to equal

$$s = \int_0^x \sqrt{1 + \frac{1}{4}t^2} dt .$$

Engineers wish to build a road connecting points A and B with a bridge spanning the valley at the point P to the corresponding point Q on the opposite side of the valley. If the cost to build the bridge is 25% more per kilometre than the cost of building the road (i.e. it is $5/4$ times as much per km), at what point $P(x, y)$ should they start the bridge to minimize the total cost? (Hint: Due to the symmetry of the situation just minimize the cost to build from point A to the middle of the bridge.)

5.6 Fundamental Theorem of Calculus (Antiderivative Form)

1-7: Compute the following definite integrals using the Fundamental Theorem of Calculus.

1. $\int_1^3 (x^2 + 3) dx$

5. $\int_{-\frac{\pi}{2}}^{\frac{\pi}{2}} (\sin x + x) dx$

2. $\int_4^1 \sqrt{x} dx$

6. $\int_{-3}^2 |x| dx$

3. $\int_{-\frac{\pi}{4}}^{\frac{\pi}{4}} \sec^2 \theta d\theta$

7. $\int_{-1}^1 \frac{1}{x^2} dx$

4. $\int_{-2}^{-1} \frac{4}{x^4} dx$

Answers:
Page 63

5.7 Indefinite Integrals

1. Explain why we use the indefinite integral symbol, $\int f(x) dx$, to represent the general form of the antiderivative of the function $f(x)$.

Answers:
Page 64

2-5: Evaluate the following indefinite integrals.

2. $\int (x^3 - 3x^4 - 6) dx$

4. $\int \csc \theta \cot \theta d\theta$

3. $\int \frac{2+x}{\sqrt{x}} dx$

5. $\int (\tan^2 x + 1) dx$

6. Find the general form of the function $y = f(x)$ such that the equation $y' = x^2 + 9$ is satisfied.

5.8 The Substitution Rule

1-6: Evaluate the following indefinite integrals using the Substitution Rule.

Answers:
Page 65

- | | |
|--|---|
| 1. $\int \frac{x^2 + 2x}{(x^3 + 3x^2 + 4)^5} dx$ | 4. $\int \cos(\theta) \sqrt{3 - \sin \theta} d\theta$ |
| 2. $\int (5x + 1) \sqrt{5x^2 + 2x} dx$ | 5. $\int x \sqrt{4x + 1} dx$ |
| 3. $\int \left(\frac{\cos \sqrt{t}}{\sqrt{t}} + t^3 \right) dt$ | 6. $\int \sec^2 \left(2x - \frac{\pi}{3} \right) dx$ |
-

7-12: Evaluate the following definite integrals using the Substitution Rule.

- | | |
|---|--|
| 7. $\int_0^2 x^3 \sqrt{x^4 + 9} dx$ | 10. $\int_1^3 \frac{x}{(2x^2 + 1)^2} dx$ |
| 8. $\int_0^{\frac{\pi}{4}} \tan^4 \theta \sec^2 \theta d\theta$ | 11. $\int_{\frac{\pi}{4}}^{\frac{\pi}{3}} \frac{\sin t}{\cos^{\frac{2}{3}} t} dt$ |
| 9. $\int_0^1 [1 + x + (1 - x)^5] dx$ | 12. $\int_0^{\frac{T}{3}} \cos \left(\frac{2\pi t}{T} \right) dt \quad (T > 0 \text{ is constant})$ |
-

5.9 Integration Using All Methods

1-11: Evaluate the given integrals using any method.

Answers:
Page 65

- | | |
|--|--|
| 1. $\int \left(x^3 + \sqrt{x} - \frac{1}{x^2} + 5 \right) dx$ | 7. $\int \frac{(\sqrt{t} + 7)^{\frac{4}{3}}}{\sqrt{t}} dt$ |
| 2. $\int (x^3 + 2)^2 dx$ | 8. $\int_{-1}^2 (2x + 3)^4 dx$ |
| 3. $\int \frac{(2x + \sqrt{x})^2}{\sqrt{x}} dx$ | 9. $\int_0^1 \frac{x^2}{(x^3 + 2)^3} dx$ |
| 4. $\int (\cos \theta + \sec^2 \theta) d\theta$ | 10. $\int_0^{\frac{\pi}{4}} \sin(2\theta) d\theta$ |
| 5. $\int 3x^2 (x^3 + 4)^5 dx$ | 11. $\int_{-\frac{3}{2}}^{\frac{3}{2}} \sin(\tan x) dx$ |
| 6. $\int \cos \theta (\sin \theta + 3)^{10} d\theta$ | |
-

5.10 Area Between Curves

1-7: Find the area of the region bounded by the given curves.

1. $y = x^2 - 3x + 8$ and $y = 4x - x^2$ over the closed interval $[-1, 2]$.
 2. $y = x^2 - 5x - 1$ and $y = x - 6$ over the closed interval $[1, 6]$.
 3. $y = x^2 + 6$, $y = 2x^2 + 2$
 4. $x = 2y^2$, $x = y^2 + 4$
 5. $y = x^2 - 2x$, $y = x - 2$
 6. $y = 0$, $y = 2x$, $x + y = 3$
 7. $y = \frac{8}{x^2}$, $y = x$, $y = 4x^2 + 4x$ and lying in the first quadrant ($x > 0$ and $y > 0$).
-

Answers:
Page 66

5.11 Distances and Net Change

1. A particle oscillates in a straight line with velocity $v(t) = \sin(\pi t)$ centimetres per second. Compute the particle's displacement over the following time intervals.
 - (a) $t = 0$ to $t = 1$ seconds.
 - (b) $t = 1$ to $t = 2$ seconds.
 - (c) $t = 0$ to $t = 2$ seconds.
2. The flow rate at a particular location for a large river over the month of May was approximately $f(t) = -\frac{1}{3}(t - 15)^2 + 100$ in gegalitres per day. Here the time t is measured in days from the beginning of the month. How much water flowed past that location between the times $t = 10$ and $t = 20$ days?

Answers:
Page 66

Module 5 Review Exercises

1-4: Find the antiderivative of the given functions.

Answers:
Page 66

$$1. f(x) = \sqrt[5]{x^3} + \frac{4}{\sqrt{x}} + x^3 + 10$$

$$2. g(x) = \frac{\sqrt{x^3} + 5x + 1}{2x^3}$$

$$3. f(\theta) = 3 \sin \theta + 5 \cos \theta + \theta^3 + 1$$

$$4. g(\theta) = 2 \tan \theta \sec \theta - 2 \cos \theta + \frac{1}{\cos^2 \theta}$$

5-7: Find function f satisfying the given conditions.

$$5. f''(x) = \sqrt{x} + x^2 - 6$$

$$6. f''(t) = 20\sqrt[3]{x^2} - 3x - 5, f(1) = 1, f'(1) = -1$$

$$7. f''(\theta) = 5 \sin \theta - 4 \cos \theta + 10, f(0) = -13, f'(0) = 2$$

8-13: Evaluate the given integrals.

$$8. \int x^4 (x^5 + 3)^8 dx$$

$$9. \int \sec^2(2\theta) [\tan(2\theta) + 1]^5 d\theta$$

$$10. \int \frac{\left(\sqrt[5]{t^2} - 4\right)^{\frac{1}{3}}}{\sqrt[5]{t^3}} dt$$

$$11. \int_{-1}^1 x(x-1)^6 dx$$

$$12. \int_0^{\pi/4} \cos^4(3x) \sin(3x) dx$$

$$13. \int_0^{\frac{\pi}{3}} \cos^2(3\theta) d\theta$$

14-16: Find the area of the region bounded by the given curves.

$$14. y = x^2 + 1 \text{ and } y = 5.$$

$$15. y = x, y = 4x, \text{ and } x + y = 3.$$

$$16. x = 10 - y^2 \text{ and } x = 2 + y^2.$$

17-18: Solve the following differential equations and initial value problems.

17. $y' = \frac{3 + x^5}{x^2}$

18. $y' \sec x = 2, y(0) = 3$

Answers

1.1 Exercises (page 3)

1. $x = 3$
2. $x = 3$ or $x = -\frac{1}{2}$. Written as a *solution set* it is $\{3, -1/2\}$
3. $x = \frac{-3 \pm \sqrt{-7}}{8}$, so no real solution.
4. $x = 2$
5. $\{-2, 2, 4\}$
6. $x = 1$
7. $\left\{0, \pm\sqrt{\frac{3}{2}}\right\}$
8. $\{\pm 1, \pm\sqrt{2}\}$
9. $\left\{-1, \pm\sqrt{\frac{2}{3}}\right\}$
10. $\left\{-1, 0, \frac{-3 \pm \sqrt{33}}{4}\right\}$

1.2 Exercises (page 3)

1. $D = \mathbb{R} = (-\infty, \infty)$; x -int=0; y -int=0
2. $D = [6, \infty)$; x -int= 6; No y -int
3. $D = \mathbb{R} = (-\infty, \infty)$; x -int=-2; y -int=4
4. $D = \mathbb{R} = (-\infty, \infty)$; x -int=-5, 0 ,1; y -int=0
5. $D = \mathbb{R} - \{1\} = (-\infty, 1) \cup (1, \infty)$; No x -int; y -int= -1
6. $D = \mathbb{R} - \{-2\} = (-\infty, -2) \cup (-2, \infty)$; No x -int; y -int= $\frac{1}{4}$
7. $D = [-2, 2]$; x -int=-2, 2; y -int=2

8. $D = \mathbb{R} = (-\infty, \infty)$; x -int = $-\frac{2}{3}$, -1 ; y -int = 2

9. $D = \mathbb{R} = (-\infty, \infty)$; x -int = 1 ; y -int = -4

10. $D = \mathbb{R} - \{-7\} = (-\infty, -7) \cup (-7, \infty)$; x -int = -5 ; y -int = $\frac{5}{7}$

11. $D = \mathbb{R} - \{-1/2, 3\} = (-\infty, -1/2) \cup (-1/2, 3) \cup (3, \infty)$; No x -int; y -int = $-\frac{10}{3}$

12. $D = \{x \in \mathbb{R} | x \leq 4\} = (-\infty, 4]$; x -int = 4 ; y -int = 2

13. $D = (-\infty, -\sqrt{10}] \cup [\sqrt{10}, \infty)$; x -int = $\pm\sqrt{10}$; No y -int

14. $D = (-\infty, -6] \cup (3/2, \infty)$; x -int = -6 ; No y -int

15. $D = (-\infty, -\sqrt{10}] \cup [\sqrt{10}, \infty)$; x -int = $\pm\sqrt{10}$; No y -int

16. $D = (-2, 0) \cup (0, \infty)$; x -int = 2 ; No y -int

17. Even

21. Neither

25. Even

29. Odd

18. Odd

22. Odd

26. Odd

30. Neither

19. Neither

23. Even

27. Neither

31. Even

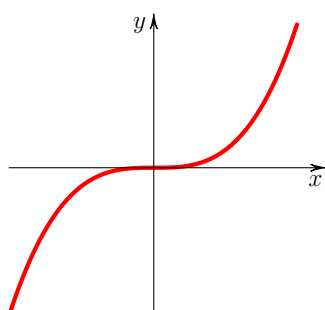
20. Odd

24. Even

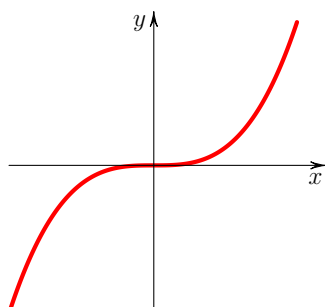
28. Even

32. Even

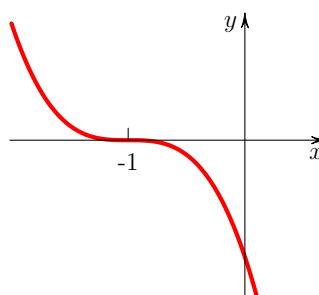
33. (a)



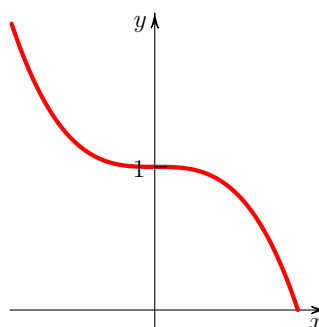
(b)



(c)



(d)



(e) $f(-x) = -f(x)$, and so f is odd.

1.3 Exercises (page 4)

1. (a) $f(x+2) = \frac{1}{x+4}$ (b) $f(f(x)) = \frac{x+2}{2x+5}$
2. $f \circ g(x) = f(g(x)) = 2(x^2 + 3)^{\frac{3}{2}}$ with $D = \mathbb{R}$, $g \circ f(x) = g(f(x)) = \sqrt{4x^6 + 3}$ with $D = \mathbb{R}$
3. $f \circ g(x) = f(g(x)) = 3(3x-2)^2 + 6(3x-2) + 4 = 27x^2 - 18x + 4$ with $D = \mathbb{R}$, $g \circ f(x) = g(f(x)) = 3(3x^2 + 6x + 4) - 2 = 9x^2 + 18x + 10$ with $D = \mathbb{R}$
4. $f \circ g(z) = f(g(z)) = \sqrt{\left(\frac{z}{z+1}\right)^2 + 5} = \sqrt{\frac{6z^2 + 10z + 5}{(z+1)^2}}$ with $D = \mathbb{R} - \{-1\}$, $g \circ f(z) = g(f(z)) = \frac{\sqrt{z^2 + 5}}{\sqrt{z^2 + 5} + 1}$ with $D = \mathbb{R}$
5. $f \circ g(x) = f(g(x)) = \frac{2(x^2 + 3) + 5}{(x^2 + 3) - 4} = \frac{2x^2 + 11}{x^2 - 1}$ with $D = \mathbb{R} - \{-1, 1\}$, $g \circ f(x) = g(f(x)) = \left(\frac{2x+5}{x-4}\right)^2 + 3 = \frac{7x^2 - 4x + 73}{(x-4)^2}$ with $D = \mathbb{R} - \{4\}$
6. $f(x) = \sqrt{x} - 3$, $g(x) = x^2 + 1$.
7. $\{\pm 1, \pm\sqrt{2}\}$

Module 1 Review Exercises (page 6)

1. $x = 1/2$, $x = -2$. Written as a solution set: $\{1/2, -2\}$
2. $\{-5, 4\}$
3. $\{-2, -1, 1\}$
4. $\{\pm 1, \pm 2\}$
5. $\{-2, 1, 2\}$
6. $D = \mathbb{R} - \left\{-\frac{4}{5}\right\}$, $x\text{-int} = \frac{3}{2}$, $y\text{-int} = -\frac{3}{4}$
7. $D = (-\infty, -2] \cup [2, \infty)$, $x\text{-int} = 2, -2$, $y\text{-int}$ does not exist
8. $D = (-\infty, -5) \cup \left[-\frac{1}{2}, \infty\right)$, $x\text{-int} = -\frac{1}{2}$, $y\text{-int} = \sqrt{\frac{1}{5}}$
9. $D = [-8, 3) \cup (3, \infty)$, $x\text{-int} = -8$, $y\text{-int} = -\frac{\sqrt{8}}{3}$
10. Even
11. Even
12. Odd
13. Odd
14. $f \circ g(x) = f(g(x)) = x^2 + 6$ with $D = \mathbb{R}$, $g \circ f(x) = g(f(x)) = \sqrt[3]{(x^3 + 6)^2}$ with $D = \mathbb{R}$

15. $f \circ g(t) = f(g(t)) = \frac{2t^2 + 11}{t^2 - 1}$ with $D = \mathbb{R} - \{1, -1\}$, $g \circ f(t) = g(f(t)) = \frac{4t^2 + 20t + 25}{(t - 4)^2} + 3$ with $D = \mathbb{R} - \{4\}$
16. $f \circ g(x) = f(g(x)) = \sqrt{\frac{2}{x+3}}$ with $D = (-3, \infty)$, $g \circ f(x) = g(f(x)) = \frac{\sqrt{x-1} + 5}{\sqrt{x-1} + 3}$ with $D = [1, \infty)$

2.1 Exercises (page 7)

1. (a) $(-1)^3 + (-1)^2 - 2(-1) + 3 = 5$, $(0)^3 + (0)^2 - 2(0) + 3 = 3$
 (b) $\frac{3-5}{0-(-1)} = -2$
 (c) $\frac{x^3 + x^2 - 2x + 3 - 5}{x - (-1)} = x^2 - 2$ ($x \neq -1$)
 (d) $\lim_{x \rightarrow -1} (x^2 - 2) = -1$

2.2 Exercises (page 7)

- | | | | |
|-------------------|-------------------|---------------------|---------------------|
| 1. $\frac{13}{5}$ | 5. $\frac{7}{4}$ | 9. $\frac{1}{4}$ | 12. $-\frac{1}{25}$ |
| 2. 0 | 6. $-\frac{1}{9}$ | 10. $-\frac{3}{10}$ | 13. -10 |
| 3. $\frac{1}{4}$ | 7. 1 | 11. -6 | 14. 12 |
| 4. 0 | 8. 1 | | 15. $\frac{7}{3}$ |

2.3 Exercises (page 8)

- | | | | |
|------|------------------|---------------------|-------------------|
| 1. 1 | 4. $\frac{7}{5}$ | 7. $-\frac{1}{\pi}$ | 9. 0 |
| 2. 1 | 5. 0 | | 10. 1 |
| 3. 0 | 6. 1 | 8. $\frac{4}{\pi}$ | 11. $\frac{1}{2}$ |

2.4 Exercises (page 8)

1. $\lim_{x \rightarrow 0^-} f = 4$, $\lim_{x \rightarrow 0^+} f = 4$, $\lim_{x \rightarrow 2^-} f = 3$, $\lim_{x \rightarrow 2^+} f = 2$, $\lim_{x \rightarrow 4^-} f = \infty$ (limit does not exist but approaches infinity), $\lim_{x \rightarrow 4^+} f = 2$
2. $\lim_{x \rightarrow 0^-} f = -1$, $\lim_{x \rightarrow 0^+} f = -1$, $\lim_{x \rightarrow 2^-} f = 1$, $\lim_{x \rightarrow 2^+} f = -2$, $\lim_{x \rightarrow 4^-} f = 2$, $\lim_{x \rightarrow 4^+} f = 2$, $\lim_{x \rightarrow 0} f = -1$, $\lim_{x \rightarrow 2} f$ does not exist, $\lim_{x \rightarrow 4} f = 2$
3. $\lim_{x \rightarrow 2^-} f(x) = \frac{2}{3}$, $\lim_{x \rightarrow 2^+} f(x) = 5$, $\lim_{x \rightarrow 2} f(x)$ does not exist as the left and right-handed limits are not equal at $x = 2$.
4. $c = \frac{2}{7}$

2.5 Exercises (page 9)

1. ∞
2. $-\infty$
3. $\frac{6}{7}$
4. ∞
5. Vertical asymptote: $x = 2$
6. No vertical asymptotes
7. Vertical asymptote: $t = 2$
8. Vertical asymptotes: $x = -2, x = 3$
9. Vertical asymptote: $x = 0$
10. Vertical asymptotes: $x = -4, x = 4$
11. Vertical asymptote: $x = 0$
12. No vertical asymptotes

2.6 Exercises (page 9)

1. “ f is continuous at $x = a$ ” if (a) a is in the domain of f (b) $\lim_{x \rightarrow a} f(x)$ exists (c) $\lim_{x \rightarrow a} f(x) = f(a)$.
2. Continuous
3. Continuous
4. Removable Discontinuity
5. Continuous
6. Infinite Discontinuity
7. Jump Discontinuity
8. (a) $\lim_{x \rightarrow 0^-} f(x) = 1$ and $\lim_{x \rightarrow 0^+} f(x) = 4$. Therefore $\lim_{x \rightarrow 0} f(x)$ does not exist.
(b) $c = \pm 1$
9. $\mathbb{R} - \{-1, 1\}$. Note the limit actually exists at $x = -1$ but the function is not defined there.
10. Let $f(x) = x^3 + 2x^2$. Then notice that $f(1) = 3$ and $f(3) = 33$. Then since $f(1) < 10 < f(3)$ and f is continuous, there exists a $c \in (1, 3)$ such that $f(c) = 10$ by the IVT. Since $f(c) = c^3 + 2c^2$ the result follows.
11. $f(x) = x^2 + \cos x - 2$ is continuous on $[0, 2]$, $f(0) = -1 < 0$, $f(2) \approx 1.58 > 0$, so by the Intermediate Value Theorem there is a c in $(0, 2)$ with $f(c) = 0$. i.e. $c^2 + \cos c - 2 = 0$ and c is therefore a solution to the equation.

Module 2 Review Exercises (page 11)

1. 1
2. $\frac{1}{24}$
3. $-\frac{3}{4}$
4. $-\frac{3}{32}$
5. $-\frac{1}{4}$
6. $\frac{4}{5}$
7. $\frac{3}{4}$
8. 4
9. 0
10. Continuous
11. Not continuous
12. Not continuous

3.1 Exercises (page 13)

1. (a) 8 (b) $m \approx 13$ (c) Point-slope form: $y = 13(x - 2) + 12$, Slope-intercept form: $y = 13x - 14$
2. (a) 1 cm (b) 17 cm (c) 8 cm/s (d) $v \approx 20$ cm/s
3. (a) $\frac{\Delta V}{\Delta P} \approx -7.47$ L/atm (b) -2.49 L/atm

3.2 Exercises (page 14)

1. $f'(2) = \lim_{h \rightarrow 0} \frac{\frac{1}{(2+h)+1} - \frac{1}{2+1}}{h} = -\frac{1}{9}$
2. $g'(4) = \lim_{h \rightarrow 0} \frac{\sqrt{2(4+h)} - \sqrt{2(4)}}{h} = \frac{1}{2\sqrt{2}}$
3. $f'(x) = \lim_{h \rightarrow 0} \frac{(x+h)^2 + 3 - (x^2 + 3)}{h} = 2x$
4. $f'(x) = \lim_{h \rightarrow 0} \frac{\frac{1}{3(x+h)} - \frac{1}{3x}}{h} = -\frac{1}{3x^2}$
5. $f'(x) = \lim_{h \rightarrow 0} \frac{(x+2+h)^2 - (x+2)^2}{h} = 2x + 4$
6. $f'(x) = \lim_{h \rightarrow 0} \frac{\sqrt{x+h+2} - \sqrt{x+2}}{h} = \frac{1}{2\sqrt{x+2}}$
7. $f'(x) = \lim_{h \rightarrow 0} \frac{\frac{3(x+h)+2}{x+h+1} - \frac{3x+2}{x+1}}{h} = \frac{1}{(x+1)^2}$
8. $f'(x) = \lim_{h \rightarrow 0} \frac{\frac{1}{\sqrt{x+h}} - \frac{1}{\sqrt{x}}}{h} = -\frac{1}{2x\sqrt{x}} = -\frac{1}{2}x^{-\frac{3}{2}}$
9. $\lim_{h \rightarrow 0^-} \frac{\sqrt{(2+h-2)^2}}{h} = \lim_{h \rightarrow 0^-} \frac{\sqrt{h^2}}{h} = \lim_{h \rightarrow 0^-} \frac{|h|}{h} = \lim_{h \rightarrow 0^-} \frac{-h}{h} = -1$
 $\lim_{h \rightarrow 0^+} \frac{\sqrt{(2+h-2)^2}}{h} = \lim_{h \rightarrow 0^+} \frac{\sqrt{h^2}}{h} = \lim_{h \rightarrow 0^+} \frac{|h|}{h} = \lim_{h \rightarrow 0^+} \frac{h}{h} = 1$

3.3 Exercises (page 14)

1. (a) Differentiable
 (b) Differentiable
 (c) Not Differentiable. Discontinuous at $x = 0$.
 (d) Not differentiable. At $x = 0$ the left and right hand limits for the derivative are not equal:

$$\lim_{h \rightarrow 0^-} \frac{f(x+h) - f(x)}{h} \neq \lim_{h \rightarrow 0^+} \frac{f(x+h) - f(x)}{h},$$

therefore the limit itself (the derivative) does not exist. Geometrically no tangent line may be drawn at the point so there can be no derivative as that is the tangent slope.

3.4 Exercises (page 15)

1. $f'(x) = \frac{1}{2}x^{-\frac{1}{2}} - 12x^{11} = \frac{1}{2\sqrt{x}} - 12x^{11}$
2. $g'(x) = -\frac{5}{2}x^{-\frac{7}{2}} = \frac{-5}{2\sqrt{x^7}}$
3. $\frac{dy}{dx} = \frac{12}{5}x^2$
4. $f'(u) = -4u^{-5} + 4u^3$; $f'(1) = 0$
5. $f'(x) = 6x^5 + 8x^3 + 2x$
6. $f'(x) = \sqrt{3} \cdot \frac{1}{2}x^{-\frac{1}{2}} + \frac{1}{\sqrt[5]{3}} \cdot \frac{1}{5}x^{-\frac{4}{5}} = \frac{\sqrt{3}}{2\sqrt{x}} + \frac{1}{5\sqrt[5]{3x^4}}$
7. $f'(x) = 2a \sin(\pi/15)x^{2a-1}$
8. $\frac{ds}{dt} = -gt + v_0$
9. 1(b): $\left. \frac{dy}{dx} \right|_{x=2} = [3x^2 + 1]_{x=2} = 13$
 2(d): $v(2) = \left. \frac{ds}{dt} \right|_{t=2} = [3t^2 + 4t]_{t=2} = 20 \text{ cm/s}$
 3(b): $\left. \frac{dV}{dP} \right|_{P=3} = -(22.4) \cdot P^{-2}|_{P=3} = -2.49 \text{ L/atm}$
10. $y = \frac{3}{2}x + \frac{1}{2}$
11. $x = 0, \frac{4}{3}$

3.5 Exercises (page 15)

1. (a) $C(2000) = 368.6732 \approx 369 \text{ ppm}$
 (b) $C'(2000) = 1.7948 \approx 1.79 \text{ ppm/year}$
 (c) $\frac{C(2005) - C(2000)}{C(2000)} \times 100 = 2.53\%$
2. (a) The volume of a cone is $V = \frac{1}{3}\pi r^2 h$. Use similar triangles to show that the radius of the surface of the liquid is $r = \frac{2}{5}y$.
 (b) $\left. \frac{dV}{dy} \right|_{y=4 \text{ m}} = \frac{64\pi}{25} \approx 8.04 \frac{\text{m}^3}{\text{m}}$

3.6 Exercises (page 16)

1. $f'(x) = (4x^3 - 6x) \left(x^{\frac{1}{3}} - x \right) + (x^4 - 3x^2 + 2) \left(\frac{1}{3}x^{-\frac{2}{3}} - 1 \right)$
2. $f'(x) = (3x^2 + \pi) (2 + x^{-3}) + (x^3 + \pi x + 2) (-3x^{-4})$
3. $\frac{dy}{dx} = (2x) (x^3 + 2) (2x^2 + \sqrt{x}) + (x^2 - 1) (3x^2) (2x^2 + \sqrt{x}) + (x^2 - 1) (x^3 + 2) \left(4x + \frac{1}{2}x^{-\frac{1}{2}} \right)$
4. $\frac{df}{dx} = -\frac{2}{(x-6)^2}$
5. $f'(\theta) = \frac{(2\theta + 3)(\theta^2 - 7) - (\theta^2 + 3\theta - 4)(2\theta)}{(\theta^2 - 7)^2} = -\frac{3\theta^2 + 6\theta + 21}{(\theta^2 - 7)^2}$
6. $g'(x) = -\frac{1}{2}x^{-\frac{3}{2}} + \frac{3}{2}x^{\frac{1}{2}} ; g'(4) = \frac{47}{16}$
7. $f'(v) = \frac{[(2)(v+4/v)+(2v+3)(1-4/v^2)](v^2+v)-(2v+3)(v+4/v)(2v+1)}{(v^2+v)^2}$
8. $h'(x) = 2cx + \frac{3}{2\sqrt{x}} (2x^2 + x) + (3\sqrt{x} + 2) (4x + 1)$

3.7 Exercises (page 16)

1. Point-slope form: $y = 8(x - 2) + 1$, Slope-intercept form: $y = 8x - 15$
2. Point-slope form: $y = -\frac{2}{5}(x - 1) + 2$, Slope-intercept form: $y = -\frac{2}{5}x + \frac{12}{5}$
3. $(-2, -12), (2, 4)$

3.8 Exercises (page 16)

1. $f'(x) = 18x (x^2 + 3)^8$
2. $\frac{dg}{dx} = -\frac{\frac{1}{2\sqrt{x}} + 1}{(x + \sqrt{x})^2} = -\frac{2\sqrt{x} + 1}{2\sqrt{x}(x^2 + x) + 4x^2}$
3. $f'(t) = -\frac{7(4t + 3)}{2(2t^2 + 3t + 4)^{\frac{3}{2}}}$
4. $y' = \frac{1}{7} \left(\frac{4x + 3}{x^2 + x} \right)^{-\frac{8}{7}} \frac{4x^2 + 6x + 3}{(x^2 + x)^2}$
5. $h'(x) = \frac{5nx^{n-1}}{3(5x^n + 4c)^{\frac{2}{3}}}$
6. $f'(x) = 5 \left[(2x + \sqrt{x})^4 + 3x \right]^4 \left[4(2x + \sqrt{x})^3 \left(2 + \frac{1}{2\sqrt{x}} \right) + 3 \right]$

3.9 Exercises (page 16)

1. Use the sine addition identity followed by the fundamental limits involving sine and cosine to get $f'(x) = 4 \cos 4x$.
2. $f'(x) = 2x \cos x - x^2 \sin x$
3. $f'(t) = \frac{3t^2(\sin t + \tan t) - t^3(\cos t + \sec^2 t)}{(\sin t + \tan t)^2}$
4. $\frac{dH}{d\theta} = -\csc \theta \cot^2 \theta - \csc^3 \theta$; $H'(\pi/3) = -\frac{10}{3\sqrt{3}}$
5. $f'(x) = (\cos x - \sin x)(\sec x - \cot x) + (\sin x + \cos x)(\sec x \tan x + \csc^2 x)$
6. $\frac{df}{d\theta} = 0$
7. (a) Since $\tan(\pi/4) = 1$, $x = \pi/4$ and $y = \pi/4$ indeed satisfy the equation.
(b) Point-slope form: $y = (1 + \pi/2)(x - \pi/4) + \pi/4$, Slope-intercept form: $y = (1 + \pi/2)x - \pi^2/8$
8. (a) $-2 = 5(0) + 3(0) - 2(1)$
(b) $y = 11x - 2$

3.10 Exercises (page 18)

1. $f'(x) = 12(x^8 - 3x^4 + 2)^{11}(8x^7 - 12x^3)$
2. $g'(x) = \frac{1}{2}(3x^2 + 2)^{-\frac{1}{2}}(6x) = \frac{3x}{\sqrt{3x^2 + 2}}$; $g'(2) = \frac{6}{\sqrt{14}}$
3. $f'(\theta) = 2\theta \cos(\theta^2)$
4. $h'(\theta) = -2 \cot \theta \csc^2 \theta$
5. $f'(x) = \sec[(x^3 + 3)(\sqrt{x} + x)] \tan[(x^3 + 3)(\sqrt{x} + x)] \left[(3x^2)(\sqrt{x} + x) + (x^3 + 3) \left(\frac{1}{2\sqrt{x}} + 1 \right) \right]$
6. $y' = (-4 \sin \sqrt[3]{x}) \cdot \left(\frac{1}{3} x^{-\frac{2}{3}} \right) = -\frac{4 \sin \sqrt[3]{x}}{3 \sqrt[3]{x^2}}$
7. $f'(x) = (-1)(3 + \sin^2 x)^{-2}(2 \sin x \cos x) = -\frac{2 \sin x \cos x}{(3 + \sin^2 x)^2}$
8. $\frac{dy}{dx} = -5(\csc x + 2)^4 \csc x \cot x + 2x + 1$
9. $y' = \pi \sec^2 \theta + \pi \sec^2(\pi \theta)$
10. $g'(x) = \frac{1}{2}(x + \sqrt{x})^{-\frac{1}{2}} \left(1 + \frac{1}{2}x^{-\frac{1}{2}} \right) (x^4 - 1)^7 + \left(\sqrt{x + \sqrt{x}} \right) (7)(x^4 - 1)^6 (4x^3)$
 $= \frac{(2\sqrt{x} + 1)(x^4 - 1)^7}{4\sqrt{x}\sqrt{x + \sqrt{x}}} + 28x^3(x^4 - 1)^6 \sqrt{x + \sqrt{x}}$

11. $f'(x) = 3 \left(\frac{x-3}{x+1} \right)^2 \cdot \frac{4}{(x+1)^2} = 12 \frac{(x-3)^2}{(x+1)^4}$
12. $\frac{dA}{dt} = -\omega \sin(\omega t + \phi) ; \left. \frac{dA}{dt} \right|_{t=0} = -\omega \sin(\phi)$
13. $f'(x) = (\cos [\cos(x^2 + x)]) \cdot (-\sin(x^2 + x)) \cdot (2x + 1)$
14. $\left\{ \frac{7\pi}{6} + 2n\pi \mid n \text{ an integer} \right\} \cup \left\{ \frac{11\pi}{6} + 2n\pi \mid n \text{ an integer} \right\} \cup \left\{ \frac{\pi}{2} + n\pi \mid n \text{ an integer} \right\}$

3.11 Exercises (page 18)

1. $y' = \frac{3-2x}{2y}$
2. $y' = \frac{6x^2y - 3x^2 - y^2}{2xy - 2x^3} ; \left. \frac{dy}{dx} \right|_{(x,y)=(1,2)} = \frac{5}{2}$
3. $y' = -\frac{b^2x}{a^2y}$
4. $y' = \frac{y \cos(xy)}{1 - x \cos(xy)}$
5. $y' = \frac{2x - \sin(x+y)}{\cos y + \sin(x+y)}$
6. $y' = \frac{x^2 \cos x + \sec y}{x \sec y \tan y}$
7. (a) Noting that $x^{\frac{2}{3}} = (\sqrt[3]{x})^2$ it follows that the values $x = -1$ and $y = 3\sqrt{3} = (\sqrt{3})^3$ simultaneously satisfy the equation.
 (b) Point-slope form: $y = \sqrt{3}(x+1) + 3\sqrt{3}$, Slope-intercept form: $y = \sqrt{3}x + 4\sqrt{3}$

3.12 Exercises (page 19)

1. $f'(x) = 20x^4 + 6x + 1$
2. $\frac{dy}{dx} = 8x^7 - \frac{6}{x^4} - \frac{1}{2}x^{-\frac{1}{2}} - 2x^{-\frac{3}{2}}$
3. $g'(t) = \frac{2}{3}t^{-\frac{1}{3}} + 4t^3 - \frac{12}{t^3}$
4. $f'(x) = \frac{1}{2}x^{-\frac{1}{2}} - \frac{5}{2}x^{-\frac{3}{2}}$
5. $g'(x) = \left(\frac{1}{2}x^{-\frac{1}{2}} + 3 \right) (x + \pi) + (\sqrt{x} + 3x + 1)$
6. $h'(y) = \frac{3(y+4)^2(1+0)(y+5) - (y+4)^3(1+0)}{(y+5)^2} = \frac{(y+4)^2(2y+11)}{(y+5)^2}$

$$7. y' = \frac{1}{4} (x^3 + 2x + 5)^{-\frac{3}{4}} (3x^2 + 2)$$

$$8. f'(\theta) = -3 \sin(3\theta) + 2 \sin \theta \cos \theta$$

$$9. g'(x) = 2x \sec^2(x^2 + 1) \cos(x) - \tan(x^2 + 1) \sin(x)$$

$$10. \frac{dy}{dt} = \frac{3}{4} (\sin t + 5)^{-\frac{1}{4}} \cos t$$

$$11. \frac{df}{dx} = \frac{1}{3} \left(\frac{x^4 + 5x - 1}{x^2 - 3} \right)^{-\frac{2}{3}} \frac{(4x^3 + 5)(x^2 - 3) - (x^4 + 5x - 1)(2x)}{(x^2 - 3)^2}$$

$$= \frac{1}{3} \left(\frac{x^4 + 5x - 1}{x^2 - 3} \right)^{-\frac{2}{3}} \frac{2x^5 - 12x^3 - 5x^2 + 2x - 15}{(x^2 - 3)^2}$$

$$12. y' = \frac{y - 3x^2y^4}{4x^3y^3 + 2y - x}$$

3.13 Exercises (page 19)

$$1. \frac{d^2f}{dx^2} = 2 \csc^2 x \cot x$$

$$2. f''(x) = 90(x - 2)^8 ; f''(3) = 90$$

$$3. y'' = 6x \sec x + 6x^2 \sec x \tan x + x^3 \sec x \tan^2 x + x^3 \sec^3 x$$

$$4. y'' = \frac{y - xy'}{y^2} = \frac{1}{y} - \frac{x^2}{y^3}$$

3.14 Exercises (page 19)

$$1. \frac{5}{\sqrt{18\pi}} \text{ km/h}$$

$$2. \frac{6}{25\pi} \text{ cm/sec}$$

$$3. \frac{3}{2} \text{ km/sec}$$

$$4. \frac{5}{3\pi} \text{ m/min}$$

$$5. \frac{1840}{29} \text{ km/h}$$

$$6. \frac{4}{5} \text{ m/sec}$$

$$7. -\frac{5}{4} \text{ cm/sec}$$

3.15 Exercises (page 20)

$$1. V \pm \Delta V = 125 \pm 15 \text{ cm}^3$$

2. $V \pm \Delta V = 288\pi \pm 72\pi \text{ cm}^3$

3. $L(x) = 3 + 4(x - 2)$

4. $L(x) = 1 + 2(x - \pi/4)$

Module 3 Review Exercises (page 21)

1. $f'(x) = 3x^2$

2. $f'(x) = \frac{11}{(x+2)^2}$

3. $f'(x) = \frac{1}{\sqrt{2x+1}}$

4. $y' = 12x^3 + \frac{\sqrt[3]{2}}{3}x^{-2/3} + \frac{5}{2}x^{-3/2}$

5. $g'(x) = \left(\frac{1}{\sqrt{2x}} - 4\right)(3x + \sin x) + (\sqrt{2x} - 4x + 3)(3 + \cos x)$

6. $h'(y) = \frac{-3y - 10}{2\sqrt{y+5}(3y+2)^2}$

7. $f'(\theta) = -2\cos\theta\sin\theta - 8\theta\sin(\theta^2)$

8. $g'(x) = 3x^2 \sec(x^3 + 4) \tan(x^3 + 4) \cos(2x) - 2 \sec(x^3 + 4) \sin(2x)$

9. $f'(x) = \frac{1}{5} \left(\frac{x^3 - 4x + 10}{4x^2 + 5} \right)^{-4/5} \frac{4x^4 + 31x^2 - 80x - 20}{(4x^2 + 5)^2}$

10. $\frac{dy}{dx} = \frac{y - 4x^3y^3}{3x^4y^2 + 8y - x - \cos y}$

11. Point-slope form: $y = -6(x - \pi/2) + 3$, Slope-intercept form: $y = -6x + 3\pi + 3$

12. $x = 1, x = -3$

13. $\theta = \frac{\pi}{3} + 2n\pi, \theta = \frac{5\pi}{3} + 2n\pi, \theta = n\pi$ (n an integer)

14. $57\pi \text{ cm}^3/\text{sec}$

15. $-\frac{1}{10} \text{ rad/sec}$

16. $\frac{1}{2(3)^{1/4}} \text{ cm/sec}$

4.1 Exercises (page 23)

1. Note: It is assumed that the functions extend beyond the graph of the plot with the same trend unless they are explicitly terminated with a point. The values below are approximate.

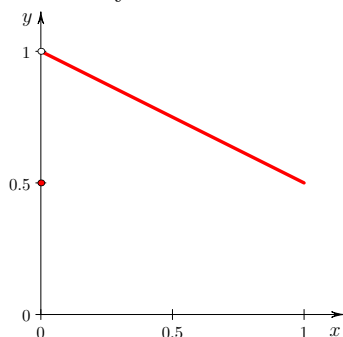
- (a) Relative minima: $f(-1.4) = -0.8$ and $f(1.9) = 0.5$; Relative maxima: $f(-2.0) = 2.0$, $f(0.4) = 1.0$, and $f(1.3) = 2.6$. No absolute minimum nor absolute maximum.
- (b) Absolute maximum value of $f(0) = 0.5$. This is also a relative maximum.
- (c) Relative minimum: $f(-1) = 2$; Relative maximum: $f(-3) = 6$, $f(0) = 3$. Absolute maximum: $f(-3) = 6$, No absolute minimum.
2. $x = 2, 4$
3. $x = 0$
4. $s = \sqrt{6}$
5. $x = -\frac{1}{3}, -3$
6. $t = 1$
7. No critical numbers
8. $t = -2, 2$
9. $x = -\sqrt{5}, 0, \sqrt{5}$
10. θ in $\left\{ \frac{\pi}{3} + 2n\pi \mid n \text{ an integer} \right\} \cup \left\{ \frac{5\pi}{3} + 2n\pi \mid n \text{ an integer} \right\}$
11. Absolute maximum: $f(-2) = f(2) = 13$, Absolute minimum: $f\left(\pm \frac{1}{\sqrt{2}}\right) = \frac{3}{4}$
12. Absolute maximum: $f(-1) = 2$, Absolute minimum: $f(-1/3) = \frac{14}{27}$
13. Absolute maximum: $g(0) = 0$, Absolute minimum: $g(2/3) = -\frac{4}{3}\sqrt{\frac{2}{3}}$
14. Absolute maximum: $H(8) = -1$, Absolute minimum: $H(-1) = -4$
15. Absolute maximum: $f(\pi/4) = f(5\pi/4) = \frac{1}{2}$, Absolute minimum: $f(3\pi/4) = f(7\pi/4) = -\frac{1}{2}$

4.2 Exercises (page 24)

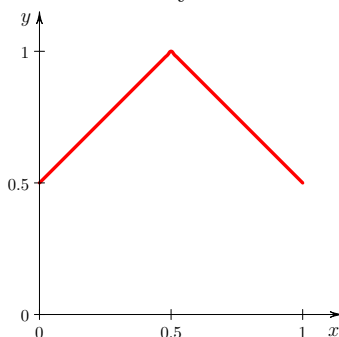
1. f is continuous on $[-1, 4]$, differentiable on $(-1, 4)$, and $f(-1) = f(4) = 2$ so Rolle's Theorem applies. Solving $f'(c) = 0$ shows $c = 7/3$ or $c = -1$, however only $c = 7/3$ is in the open interval $(-1, 4)$.

2. Each of the following graphs of f give one possible counterexample. There is no point in the interval $[0, 1]$ where the function has a horizontal tangent and hence the conclusion to Rolle's theorem is invalid.

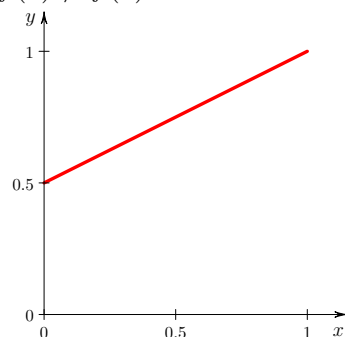
(a) Continuity fails:



(b) Differentiability fails:



(c) $f(0) \neq f(1)$:



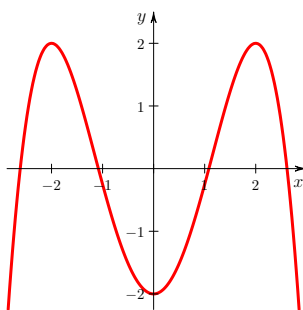
3. Use the Mean Value Theorem.

4. $c = 1$ in $(-1, 2)$ has $f'(c) = \frac{10 - (-5)}{2 - (-1)} = 5$.

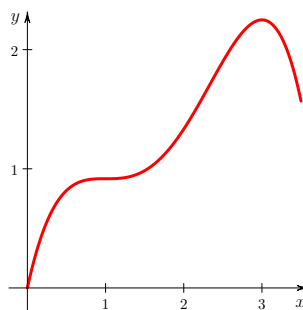
4.3 Exercises (page 25)

- Decreasing on: $(-\infty, -1)$; Increasing on: $(-1, \infty)$; No relative maxima; Relative minimum: $f(-1) = 0$
- Increasing on: $(-\infty, 1) \cup (1, \infty)$; No relative maxima or minima
- Decreasing on: $\left(0, \frac{7\pi}{6}\right) \cup \left(\frac{11\pi}{6}, 2\pi\right)$; Increasing on: $\left(\frac{7\pi}{6}, \frac{11\pi}{6}\right)$;
Relative maximum: $f\left(\frac{11\pi}{6}\right) = 2\sqrt{3} - \frac{11\pi}{3}$; Relative minimum: $f\left(\frac{7\pi}{6}\right) = -2\sqrt{3} - \frac{7\pi}{3}$
- Decreasing on: $(-\infty, 0)$; Increasing on: $(0, \infty)$; Relative minimum: $f(0) = 0$
- Decreasing on: $(-\infty, 0)$; Increasing on: $(0, \infty)$; Relative maximum: $f(0) = 2$. Note that the First Derivative Test cannot be applied here because $f(x)$ is discontinuous at $x = 0$. One must return to the definition of relative maximum to evaluate the critical number $x = 0$.

6.



7.



Note that your graphs should be equivalent up to vertical shift by a constant.

4.4 Exercises (page 25)

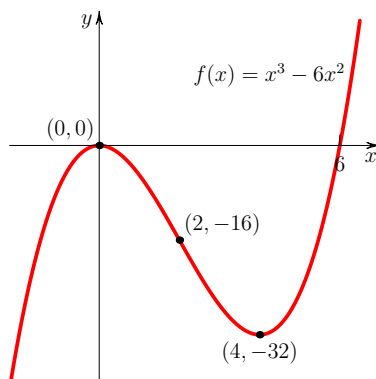
1. Notice that $f''(x) = 24x^2$ and $24x^2$ is positive for all values of x except 0. The only potential inflection point would therefore occur at $x = 0$ but the concavity is positive on both sides of $x = 0$ and hence does not change at that value.
2. Notice that $f''(x) = \frac{2}{x^3}$ which is negative for $x < 0$ and positive for $x > 0$. Therefore the concavity does, in fact, change at $x = 0$. However the function is not defined at 0 so there is no point on the curve there (it is a vertical asymptote) and hence no inflection point exists.
3. Notice that $f'(x) = 5x^2(x-3)(x+3)$, $f''(x) = 10x(\sqrt{2}x-3)(\sqrt{2}x+3)$. Relative maximum: $f(-3) = 163$; Relative minimum: $f(3) = -161$; Inflection points: $\left(-\frac{3}{\sqrt{2}}, -\frac{243}{2^{\frac{5}{2}}} + \frac{405}{2^{\frac{3}{2}}} + 1\right)$, $(0, 1)$, $\left(\frac{3}{\sqrt{2}}, \frac{243}{2^{\frac{5}{2}}} - \frac{405}{2^{\frac{3}{2}}} + 1\right)$; Concave upward on: $(-3/\sqrt{2}, 0) \cup (3/\sqrt{2}, \infty)$; Concave downward on: $(-\infty, -3/\sqrt{2}) \cup (0, 3/\sqrt{2})$;

4.5 Exercises (page 26)

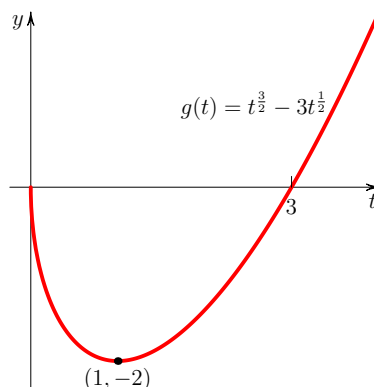
1. Relative maximum: $f(-2) = 17$; Relative minimum: $f(2) = -15$
2. Relative maximum at $f\left(-\frac{\pi}{2}\right) = 3$; Relative minimum: $f\left(\frac{\pi}{2}\right) = -5$;
3. No since $f''(x) = 12\cos^2 x \sin^2 x - 4\sin^4 x$ vanishes at $x = 0$ so the test is inconclusive. The first derivative test shows that $x = 0$ is the location of a local minimum of f .

4.6 Exercises (page 26)

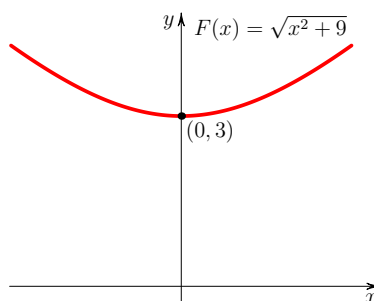
1. $D = \mathbb{R} = (-\infty, \infty)$; x -int= 0, 6; y -int= 0; Increasing on: $(-\infty, 0) \cup (4, \infty)$; Decreasing on: $(0, 4)$; Relative maximum: $f(0) = 0$; Relative minimum: $f(4) = -32$; Concave upward on: $(2, \infty)$; Concave downward on: $(-\infty, 2)$; Inflection point: $(2, -16)$; Graph:



2. $D = [0, \infty)$; t -int= 0, 3; y -int= 0; Increasing on: $(1, \infty)$; Decreasing on: $(0, 1)$; No relative maxima; Relative minimum: $g(1) = -2$; Concave upward on: $(0, \infty)$; Not concave downward anywhere; No inflection points; Graph:



3. $D = \mathbb{R} = (-\infty, \infty)$; No x -int; y -int= 3; Increasing on: $(0, \infty)$; Decreasing on: $(-\infty, 0)$; No relative maxima; Relative minimum: $F(0) = 3$; Concave upward on: $(-\infty, \infty)$; Not concave downward anywhere; No inflection points; Graph:



4.7 Exercises (page 26)

- | | |
|---|-----------------|
| 1. 0 | 7. ∞ |
| 2. ∞ | 8. 0 |
| 3. $-\frac{1}{6}$ | 9. 1 |
| 4. 2 | 10. $-\sqrt{2}$ |
| 5. $-\frac{3}{2}$ | 11. 4 |
| 6. $\frac{1}{3}$ | 12. 2 |
| | 13. 3 |
| 14. Horizontal asymptote: $y = \frac{3}{2}$ | |
| 15. No horizontal asymptotes | |
| 16. Horizontal asymptotes: $y = -1$, $y = 1$ | |

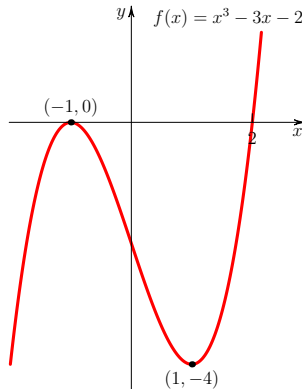
17. Horizontal asymptote: $y = \frac{1}{2}$
18. Horizontal asymptote: $y = 0$ (Hint: The Squeeze Theorem, generalized to a limit at infinity, can be used here to evaluate the limits.)
19. Horizontal asymptote: $y = 5$
20. Horizontal asymptote: $y = 1$
21. Horizontal asymptotes: $y = -\frac{1}{2}$, $y = \frac{1}{2}$

4.8 Exercises (page 27)

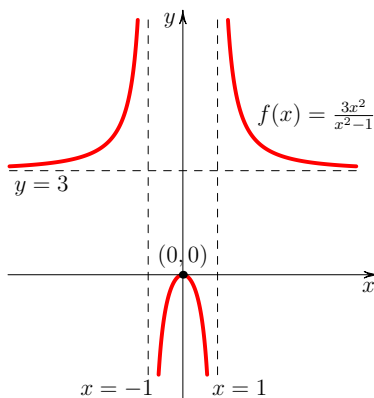
1. Slant asymptote: $y = 3x - 10$
2. No slant asymptotes
3. Slant asymptote: $y = x - 2$

4.9 Exercises (page 27)

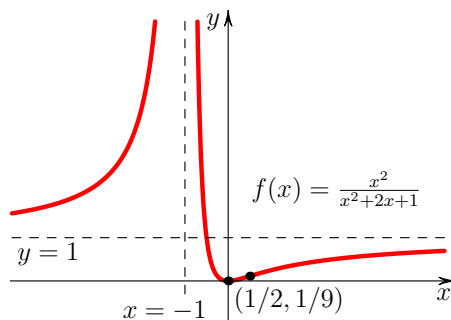
1. Notice $f'(x) = 3x^2 - 3 = 3(x+1)(x-1)$ and $f''(x) = 6x$. $D = \mathbb{R} = (-\infty, \infty)$; x -int= $-1, 2$; y -int= -2 ; No asymptotes; No symmetry; Increasing on: $(-\infty, -1) \cup (1, \infty)$; Decreasing on: $(-1, 1)$; Relative maxima: $f(-1) = 0$; Relative minimum: $f(1) = -4$; Concave upward on: $(0, \infty)$; Concave downward on $(-\infty, 0)$; Inflection point: $(0, -2)$; Graph:



2. Notice that the first and second derivatives simplify to $y'(x) = -\frac{6x}{(x^2-1)^2}$ and $y'' = \frac{6(3x^2+1)}{(x^2-1)^3}$.
 $D = \mathbb{R} - \{-1, 1\} = (-\infty, -1) \cup (-1, 1) \cup (1, \infty)$; x -int= 0; y -int= 0; Horizontal asymptote: $y = 3$; Vertical asymptotes: $x = -1$, $x = 1$; Symmetric about the y -axis; Increasing on: $(-\infty, -1) \cup (-1, 0)$; Decreasing on: $(0, 1) \cup (1, \infty)$; Relative maxima: $f(0) = 0$; No relative minimum; Concave upward on: $(-\infty, -1) \cup (1, \infty)$; Concave downward on $(-1, 1)$; No inflection points; Graph:



3. Notice that the derivatives simplify to $f'(x) = \frac{2x}{(x+1)^3}$ and $f''(x) = \frac{2-4x}{(x+1)^4}$. $D = \mathbb{R} - \{-1\} = (-\infty, -1) \cup (-1, \infty)$; x -int= 0; y -int= 0; Horizontal asymptote: $y = 1$; Vertical asymptote: $x = -1$; No symmetry; Increasing on: $(-\infty, -1) \cup (0, \infty)$; Decreasing on: $(-1, 0)$; No relative maxima; Relative minimum: $f(0) = 0$; Concave upward on: $(-\infty, -1) \cup (-1, 1/2)$; Concave downward on $(1/2, \infty)$; Inflection point: $(1/2, 1/9)$; Graph:



4.10 Exercises (page 28)

- Base length= $\frac{5}{2}$ m, Height= $\frac{5}{2}$ m, Area= $\frac{25}{8}$ m²
- $(3/5, 16/5)$. For part (a) note it is easier to minimize the distance-squared than the distance. For part (b) the line perpendicular is $y = -\frac{1}{2}(x-3)+2 = -\frac{1}{2}x + \frac{1}{2}$. To find the intersection of this and the original line we solve the two equations simultaneously since the point of interest must lie on both lines.
- First number=10, Second number=5
- Radius= $\sqrt[3]{\frac{5}{\pi}} \approx 1.17$ cm, Height= $2\sqrt[3]{\frac{5}{\pi}} \approx 2.34$ cm

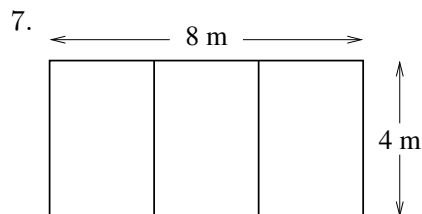
5. (a) $x = \frac{2}{3\sqrt{7}} \approx 0.252$ km

(b) $x = \frac{2}{\sqrt{15}} \approx 0.516$ km

(c) $x = \frac{b}{\sqrt{\left(\frac{w}{v}\right)^2 - 1}}$

- (d) Although the total time taken t does depend on a the value for x does not. As expected, it does not matter how far upstream you start, you would still turn off at the same location. That said, a does play a role in the solution because valid values of x must lie in the interval $[0, a]$. If a had been smaller than the solution for x , say in part (a) had the starting distance been 0.2 km, then the critical number would no longer be in the interval and that solution would be invalid. One would consider the endpoints of the interval to see which was optimal.

6. $x = 40$ m, $h = 20$ m



8. $10(2 - \sqrt{2}) \approx 5.9$ km

9. $x = 100$ m, $y = \frac{200}{\pi}$ m

10. $r = 4$ cm, $\theta = 2$ rad $\approx 115^\circ$, $A = 16$ cm²

Module 4 Review Exercises (page 31)

1. $x = -1$, $x = -3$

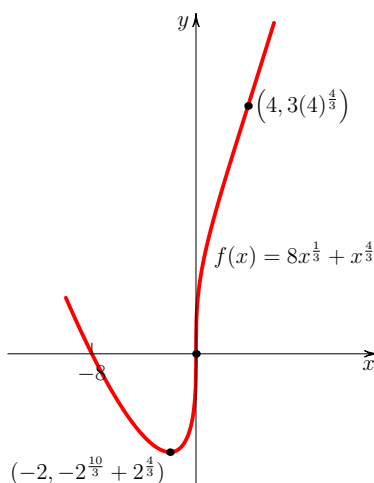
2. $t = 0$, $t = 3$

3. θ in $\left\{\frac{\pi}{6} + 2n\pi\right\} \cup \left\{\frac{5\pi}{6} + 2n\pi\right\} \cup \left\{\frac{\pi}{2} + 2n\pi\right\} \cup \left\{\frac{3\pi}{2} + 2n\pi\right\}$ (n an integer)

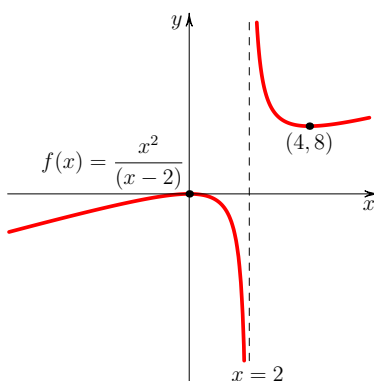
4. Absolute maximum: $f(1) = \frac{1}{17}$, Absolute minimum: $f(-1) = -\frac{1}{17}$

5. Absolute maximum: $g(1) = \sqrt{7}$, Absolute minimum: $g(0) = 0$

6. $D = \mathbb{R} = (-\infty, \infty)$; x -int=0, -8; y -int=0; No asymptotes; Increasing on: $(-2, \infty)$; Decreasing on: $(-\infty, -2)$; No relative maxima; Relative minimum: $f(-2) = -2^{\frac{10}{3}} + 2^{\frac{4}{3}}$; Concave upward on $(-\infty, 0) \cup (4, \infty)$; Concave downward on $(0, 4)$; Inflection points: $(0, 0)$, $(4, 3(4)^{\frac{4}{3}})$; Graph:



7. $D = \mathbb{R} - \{2\} = (-\infty, 2) \cup (2, \infty)$; x -int=0; y -int=0; Vertical asymptote: $x = 2$; Increasing on: $(-\infty, 0) \cup (4, \infty)$; Decreasing on $(0, 2) \cup (2, \infty)$; Relative maximum: $f(0) = 0$; Relative minimum: $f(4) = 8$, , Concave upward on $(2, \infty)$; Concave downward on $(-\infty, 2)$; No inflection points; Graph:



8. 0

9. 5

10. $-\frac{\sqrt{5}}{2}$ 11. $-\infty$ 12. Vertical asymptote: $x = 2$, Horizontal asymptote: $y = 2$ 13. Vertical asymptote: $t = -\frac{3}{2}$, Horizontal asymptotes: $y = -1$, $y = 1$ 14. Vertical length in diagram is 30 m and horizontal length is $\frac{100}{3}$ m; lot area=2560 m²

15. Brick side is 10 m and exclusively fence side is 25 m

16. Maximal area occurs when Width=Circle diameter= $\frac{20}{4+\pi}$ m and Height= $\frac{10}{4+\pi}$ m (i.e. half the width).

5.1 Exercises (page 33)

- Both F_1 and F_2 differentiate to x^3 . As this problem suggests, any two antiderivatives of a function differ at most by a constant.
- $F(x) = x^3 - \frac{5}{2}x^2 + 6x + C$
- $F(x) = \frac{1}{2}x^2 - \frac{4}{x} + C$
- $G(t) = \frac{2}{3}t^{\frac{3}{2}} + 4t^{\frac{1}{2}} + C$
- $H(x) = \frac{3}{5}x^{\frac{5}{3}} - \frac{4}{7}x^7 + \pi x + C$
- $F(\theta) = 2\sin\theta + \cos\theta + \tan\theta + C$
- $f(x) = \frac{1}{10}x^5 - \frac{5}{3}x^3 + \frac{3}{2}x^2 + Cx + D$
- $f(t) = \frac{4}{15}t^{\frac{5}{2}} + t^3 - \frac{5}{3}t + \frac{7}{5}$
- $f(\theta) = -3\sin\theta - \cos\theta + \frac{5}{2}\theta^2 + 2\theta + 4$
- If $f'''(x) = 0$, then $f''(x) = C$ where C is a real constant. If C is non-zero then f has the same concavity everywhere, while if $C = 0$ then $f''(x) = 0$ implies $f(x) = Dx + E$ so f is linear and hence has no point of inflection.

5.2 Exercises (page 34)

- $\frac{41}{4}$
- 60
- $\frac{1}{n^3} \left(\frac{2n^3 + 3n^2 + n}{6} + n \right) = \frac{2n^2 + 3n + 7}{6n^2}$
- $\frac{2n^3 + 3n^2 + n}{6} - \frac{3n^2 + 3n}{2} = \frac{n^3 - 3n^2 - 4n}{3}$

5.3 Exercises (page 34)

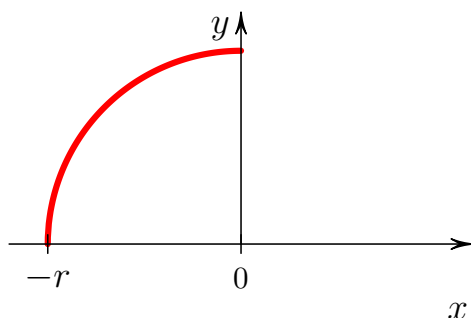
- $S_n = \frac{3}{n} \sum_{i=1}^n f\left(1 + \frac{3i}{n}\right) = \sum_{i=1}^n \left(\frac{9}{n} + \frac{27i}{n^2} + \frac{54i^2}{n^3}\right) = \frac{81}{2} + \frac{81}{2n} + \frac{9}{n^2}$
 - $A = \lim_{n \rightarrow \infty} S_n = \frac{81}{2}$

5.4 Exercises (page 35)

- 6
 - 4
 - Increasing on $(-6, -5) \cup (0, 5)$
 - Decreasing on $(-5, 0) \cup (5, 6)$

2. 6
4. -3
3. 30
5. $\frac{7}{2}$

6. Notice that the area can be viewed as the quarter of a circle:



Then the integral is $\frac{1}{4}(\pi r^2)$. (Since the area is above the x -axis the integral is positive.)

7. $\int_3^9 f(x) dx$

8. $S_n = \frac{3}{n} \left(\frac{27n^4 + 54n^3 + 27n^2}{4n^3} + n \right) = \frac{93n^2 + 162n + 81}{4n^2}$
 and so $\int_0^3 (x^3 + 1) dx = \lim_{n \rightarrow \infty} S_n = \frac{93}{4}$.

9. $S_n = b^3 \left(\frac{1}{3} + \frac{1}{2n} + \frac{1}{6n^2} \right)$ and so $\int_0^b x^2 dx = \lim_{n \rightarrow \infty} S_n = \frac{b^3}{3}$.

5.5 Exercises (page 36)

1. $\frac{dF}{dx} = \sqrt{x^3 + 2x + 1}$
2. $h'(x) = 4x^3 \sqrt{x^{12} + 2x^4 + 1}$
3. $g'(x) = -[\cos(x^3)]$
4. Noting that $H(x) = \int_{2x}^0 \sqrt[3]{t^3 + 1} dt + \int_0^{3x} \sqrt[3]{t^3 + 1} dt = -\int_0^{2x} \sqrt[3]{t^3 + 1} dt + \int_0^{3x} \sqrt[3]{t^3 + 1} dt$, one gets $H'(x) = -2\sqrt[3]{8x^3 + 1} + 3\sqrt[3]{27x^3 + 1}$
5. $f'(x) = \frac{2}{\sqrt{\pi}} e^{-(x^3)^2} (3x^2) = \frac{6x^2}{\sqrt{\pi}} e^{-x^6}$ (Use the Chain Rule and the Fundamental Theorem of Calculus.)
6. $(x, y) = \left(\frac{3}{2} \text{ km}, \frac{7}{16} \text{ km} \right)$

5.6 Exercises (page 37)

1. $\frac{44}{3}$

2. $-\frac{14}{3}$
3. 2
4. $\frac{7}{6}$
5. 0
6. $\frac{13}{2}$
7. The Fundamental Theorem of Calculus is not applicable here because the integrand $\frac{1}{x^2}$ is discontinuous on $[-1, 1]$. The area under the curve (i.e. the integral) in fact diverges to $+\infty$. To show that requires a consideration of improper integrals.

5.7 Exercises (page 37)

1. The Fundamental Theorem of Calculus shows that the definite integral $\int_a^b f(x) dx$ is, assuming the conditions of the theorem are met, intimately connected to the antiderivative of f by the relation $\int_a^b f(x) dx = F(b) - F(a)$ where F is an antiderivative of f . Thus in many cases finding a definite integral is a two-step process where first one finds an antiderivative of f and then secondly takes the difference of that function evaluated at the limits of integration. It is natural, therefore, to generally write the answer to the first step, namely the antiderivative of f , symbolically as $\int f(x) dx$. (The notation is further convenient because it embeds the function we are antidifferentiating directly in the symbol in the same way we write $\frac{df}{dx}$ abstractly for the derivative of f .)
2. $\frac{x^4}{4} - \frac{3x^5}{5} - 6x + C$
3. $4x^{\frac{1}{2}} + \frac{2}{3}x^{\frac{3}{2}} + C$
4. $-\csc \theta + C$
5. $\int (\tan^2 x + 1) dx = \int \sec^2 x dx = \tan x + C$
6. The equation states that the derivative of y is $x^2 + 9$ so y must be the general form of the antiderivative of $x^2 + 9$ which is just its indefinite integral:

$$y = \int (x^2 + 9) dx = \frac{1}{3}x^3 + 9x + C$$

The general solution for any differential equation of the form $y' = f(x)$ is similarly $y = \int f(x) dx$.

5.8 Exercises (page 38)

1. $-\frac{1}{12}(x^3 + 3x^2 + 4)^{-4} + C$
2. $\frac{1}{3}(5x^2 + 2x)^{\frac{3}{2}} + C$
3. $2\sin(\sqrt{t}) + \frac{1}{4}t^4 + C$
4. $-\frac{2}{3}(3 - \sin \theta)^{\frac{3}{2}} + C$
5. $\frac{1}{40}(4x + 1)^{\frac{5}{2}} - \frac{1}{24}(4x + 1)^{\frac{3}{2}} + C$
6. $\frac{1}{2}\tan\left(2x - \frac{\pi}{3}\right) + C$
7. Using $u = x^4 + 9$, integral is $= \int_9^{25} u^{\frac{1}{2}} \frac{du}{4} = \frac{49}{3}$
8. Using $u = \tan \theta$, integral is $= \int_0^1 u^4 du = \frac{1}{5}$
9. Breaking the integral into three separate integrals (one per term) and using $u = 1 - x$ on the last one that integral equals $= \int_1^0 u^5(-du) = \frac{1}{6}$. Combining this with the definite integral of the first two terms gives the final answer $\frac{5}{3}$. Alternatively, one can find the indefinite integral of the third term (i.e. substitute back to x) to get the antiderivative of the entire integrand as $x + \frac{1}{2}x^2 - \frac{1}{6}(1 - x)^6 + C$ and evaluate that at the original limits of x .
10. Using $u = 2x^2 + 1$, integral is $= \int_3^{19} u^{-2} \frac{du}{4} = \frac{4}{57}$
11. Using $u = \cos t$, integral is $= \int_{\frac{1}{\sqrt{2}}}^{\frac{1}{2}} u^{-\frac{2}{3}}(-du) = 3\left(\frac{1}{\sqrt[6]{2}} - \frac{1}{\sqrt[3]{2}}\right)$
12. Using $u = \frac{2\pi t}{T}$, integral is $= \int_0^{\frac{\pi}{3}} \cos(u) \frac{T du}{2\pi} = \frac{\sqrt{3} T}{4\pi}$

5.9 Exercises (page 38)

1. $\frac{1}{4}x^4 + \frac{2}{3}x^{\frac{3}{2}} + \frac{1}{x} + 5x + C$
2. $\frac{1}{7}x^7 + x^4 + 4x + C$
3. $\frac{8}{5}x^{\frac{5}{2}} + 2x^2 + \frac{2}{3}x^{\frac{3}{2}} + C$
4. $\sin \theta + \tan \theta + C$
5. $\frac{1}{6}(x^3 + 4)^6 + C$

6. $\frac{1}{11} (\sin \theta + 3)^{11} + C$
7. $\frac{6}{7} (\sqrt{t} + 7)^{\frac{7}{3}} + C$
8. $\frac{16806}{10}$
9. $\frac{5}{216}$
10. $\frac{1}{2}$
11. 0 Note that since sine and tangent are odd, the integrand itself is odd. Since the limits are $\pm a$, the integral vanishes.

5.10 Exercises (page 39)

- | | |
|--------------------------------------|--------------------------------------|
| 1. $\frac{39}{2}$ units ² | 5. $\frac{1}{6}$ unit ² |
| 2. 13 units ² | |
| 3. $\frac{32}{3}$ unit ² | 6. 3 unit ² |
| 4. $\frac{32}{3}$ unit ² | 7. $\frac{16}{3}$ units ² |

5.11 Exercises (page 39)

1. (a) $\int_0^1 v(t) dt = \frac{2}{\pi}$ cm
 (b) $\int_1^2 v(t) dt = -\frac{2}{\pi}$ cm
 (c) 0 cm (The particle is back where it started after 2 seconds.)
2. $\frac{8750}{9}$ giga litres

Module 5 Review Exercises (page 40)

1. $F(x) = \frac{5}{8}x^{8/5} + 8x^{1/2} + \frac{1}{4}x^4 + 10x + C$
2. $G(x) = -x^{-1/2} - \frac{5}{2x} - \frac{1}{4x^2} + C$
3. $F(\theta) = -3 \cos \theta + 5 \sin \theta + \frac{1}{4}\theta^4 + \theta + C$
4. $G(\theta) = 2 \sec \theta - 2 \sin \theta + \tan \theta + C$
5. $f(x) = \frac{4}{15}x^{5/2} + \frac{1}{12}x^4 - 3x^2 + Cx + D$

$$6. f(t) = \frac{9}{2}t^{8/3} - \frac{1}{2}t^3 - \frac{5}{2}t^2 - \frac{13}{2}t + 6$$

$$7. f(\theta) = -5 \sin \theta + 4 \cos \theta + 5\theta^2 + 7\theta - 17$$

$$8. \frac{1}{45} (x^5 + 3)^9 + C$$

$$9. \frac{1}{12} [\tan(2\theta) + 1]^6 + C$$

$$10. \frac{15}{8} (t^{2/5} - 4)^{4/3} + C$$

$$11. -\frac{96}{7}$$

$$12. \frac{1}{15} \left(\frac{\sqrt{2}}{8} + 1 \right)$$

$$13. \frac{\pi}{6}$$

$$14. \frac{32}{3}$$

$$15. \frac{27}{20}$$

$$16. \frac{64}{3}$$

$$17. y = -\frac{3}{x} + \frac{1}{4}x^4 + C$$

$$18. y = 2 \sin x + 3$$

GNU Free Documentation License

Version 1.3, 3 November 2008
Copyright © 2000, 2001, 2002, 2007, 2008 Free Software Foundation, Inc.

<<http://fsf.org/>>

Everyone is permitted to copy and distribute verbatim copies of this license document, but changing it is not allowed.

Preamble

The purpose of this License is to make a manual, textbook, or other functional and useful document “free” in the sense of freedom: to assure everyone the effective freedom to copy and redistribute it, with or without modifying it, either commercially or noncommercially. Secondly, this License preserves for the author and publisher a way to get credit for their work, while not being considered responsible for modifications made by others.

This License is a kind of “copyleft”, which means that derivative works of the document must themselves be free in the same sense. It complements the GNU General Public License, which is a copyleft license designed for free software.

We have designed this License in order to use it for manuals for free software, because free software needs free documentation: a free program should come with manuals providing the same freedoms that the software does. But this License is not limited to software manuals; it can be used for any textual work, regardless of subject matter or whether it is published as a printed book. We recommend this License principally for works whose purpose is instruction or reference.

1. APPLICABILITY AND DEFINITIONS

This License applies to any manual or other work, in any medium, that contains a notice placed by the copyright holder saying it can be distributed under the terms of this License. Such a notice grants a world-wide, royalty-free license, unlimited in duration, to use that work under the conditions stated herein. The “**Document**”, below, refers to any such manual or work. Any member of the public is a licensee, and is addressed as “**you**”. You accept the license if you copy, modify or distribute the work in a way requiring permission under copyright law.

A “**Modified Version**” of the Document means any work containing the Document or a portion of it, either copied verbatim, or with modifications and/or translated into another language.

A “**Secondary Section**” is a named appendix or a front-matter section of the Document that deals exclusively with the relationship of the publishers or authors of the Document to the Document’s overall subject (or to related matters) and contains nothing that could fall directly within that overall subject. (Thus, if the Document is in part a textbook of mathematics, a Secondary Section may not explain any mathematics.) The relationship could be a matter of historical connection with the subject or with related matters, or of legal, commercial, philosophical, ethical or political position regarding them.

The “**Invariant Sections**” are certain Secondary Sections whose titles are designated, as being those of Invariant Sections, in the notice that says that the Document is released under this License. If a section does not fit the above definition of Secondary then it is not allowed to be designated as Invariant. The Document may contain zero Invariant Sections. If the Document does not identify any Invariant Sections then there are none.

The “**Cover Texts**” are certain short passages of text that are listed, as Front-Cover Texts or Back-Cover Texts, in the notice that says that the Document is released under this License. A Front-Cover Text may be at most 5 words, and a Back-Cover Text may be at most 25 words.

A “**Transparent**” copy of the Document means a machine-readable copy, represented in a format whose specification is available to the general public, that is suitable for revising the document straightforwardly with generic text editors or (for images composed of pixels) generic paint programs or (for drawings) some widely available drawing editor, and that is suitable for input to text formatters or for automatic translation to a variety of formats suitable for input to text formatters. A copy made in an otherwise Transparent file format whose markup, or absence of markup, has been arranged to thwart or discourage subsequent modification by readers is not Transparent. An image format is not Transparent if used for any substantial amount of text. A copy that is not “Transparent” is called “**Opaque**”.

Examples of suitable formats for Transparent copies include plain ASCII without markup, Texinfo input format, LaTeX input format, SGML or XML using a publicly available DTD, and standard-conforming simple HTML, PostScript or PDF designed for human modification. Examples of transparent image formats include PNG, XCF and JPG. Opaque formats include proprietary formats that can be read and edited only by proprietary word processors, SGML or XML for which the DTD and/or processing tools are not generally available, and the machine-generated HTML, PostScript or PDF produced by some word processors for output purposes only.

The “**Title Page**” means, for a printed book, the title page itself, plus such following pages as are needed to hold, legibly, the material this License requires to appear in the title page. For works in formats which do not have any title page as such, “Title Page” means the text near the most prominent appearance of the work’s title, preceding the beginning of the body of the text.

The “**publisher**” means any person or entity that distributes copies of the Document to the public.

A section “**Entitled XYZ**” means a named subunit of the Document whose title either is precisely XYZ or contains XYZ in parentheses following text that translates XYZ in another language. (Here XYZ stands for a specific section name mentioned below, such as “**Acknowledgements**”, “**Dedications**”, “**Endorsements**”, or “**History**”.) To “**Preserve the Title**” of such a section when you modify the Document means that it remains a section “**Entitled XYZ**” according to this definition.

The Document may include Warranty Disclaimers next to the notice which states that this License applies to the Document. These Warranty Disclaimers are considered to be included by reference in this License, but only as regards disclaiming warranties: any other implication that these Warranty Disclaimers may have is void and has no effect on the meaning of this License.

2. VERBATIM COPYING

You may copy and distribute the Document in any medium, either commercially or noncommercially, provided that this License, the copyright notices, and the license notice saying this License applies to the Document are reproduced in all copies, and that you add no other conditions whatsoever to those of this License. You may not use technical measures to obstruct or control the reading or further copying of the copies you make or distribute. However, you may accept compensation in exchange for copies. If you distribute a large enough number of copies you must also follow the conditions in section 3.

You may also lend copies, under the same conditions stated above, and you may publicly display copies.

3. COPYING IN QUANTITY

If you publish printed copies (or copies in media that commonly have printed covers) of the Document, numbering more than 100, and the Document’s license notice requires Cover Texts, you must enclose the copies in covers that carry, clearly and legibly, all these Cover Texts: Front-Cover Texts on the front cover, and Back-Cover Texts on the back cover. Both covers must also clearly and legibly identify you as the publisher of these copies. The front cover must present the full title with all words of the title equally prominent and visible. You may add other material on the covers in addition. Copying with changes limited to the covers, as long as they preserve the title of the Document and satisfy these conditions, can be treated as verbatim copying in other respects.

If the required texts for either cover are too voluminous to fit legibly, you should put the first ones listed (as many as fit reasonably) on the actual cover, and continue the rest onto adjacent pages.

If you publish or distribute Opaque copies of the Document numbering more than 100, you must either include a machine-readable Transparent copy along with each Opaque copy, or state in or on each Opaque copy a computer-network location from which the general network-using public has access to download using public-standard network protocols a complete Transparent copy of the Document, free of added material. If you use the latter option, you must take reasonably prudent steps, when you begin distribution of Opaque copies in quantity, to ensure that this Transparent copy will remain thus accessible at the stated location until at least one year after the last time you distribute an Opaque copy (directly or through your agents or retailers) of that edition to the public.

It is requested, but not required, that you contact the authors of the Document well before redistributing any large number of copies, to give them a chance to provide you with an updated version of the Document.

4. MODIFICATIONS

You may copy and distribute a Modified Version of the Document under the conditions of sections 2 and 3 above, provided that you release the Modified Version under precisely this License, with the Modified Version filling the role of the Document, thus licensing distribution and modification of the Modified Version to whoever possesses a copy of it. In addition, you must do these things in the Modified Version:

- A. Use in the Title Page (and on the covers, if any) a title distinct from that of the Document, and from those of previous versions (which should, if there were any, be listed in the History section of the Document). You may use the same title as a previous version if the original publisher of that version gives permission.
- B. List on the Title Page, as authors, one or more persons or entities responsible for authorship of the modifications in the Modified Version, together with at least five of the principal authors of the Document (all of its principal authors, if it has fewer than five), unless they release you from this requirement.
- C. State on the Title page the name of the publisher of the Modified Version, as the publisher.
- D. Preserve all the copyright notices of the Document.
- E. Add an appropriate copyright notice for your modifications adjacent to the other copyright notices.
- F. Include, immediately after the copyright notices, a license notice giving the public permission to use the Modified Version under the terms of this License, in the form shown in the Addendum below.
- G. Preserve in that license notice the full lists of Invariant Sections and required Cover Texts given in the Document’s license notice.
- H. Include an unaltered copy of this License.
- I. Preserve the section Entitled “History”, Preserve its Title, and add to it an item stating at least the title, year, new authors, and publisher of the Modified Version as given on the Title Page. If there is no section Entitled “History” in the Document, create one stating the title, year, authors, and publisher of the Document as given on its Title Page, then add an item describing the Modified Version as stated in the previous sentence.
- J. Preserve the network location, if any, given in the Document for public access to a Transparent copy of the Document, and likewise the network locations given in the Document for previous versions it was based on. These may be placed in the “History” section. You may omit a network location for a work that was published at least four years before the Document itself, or if the original publisher of the version it refers to gives permission.
- K. For any section Entitled “Acknowledgements” or “Dedications”, Preserve the Title of the section, and preserve in the section all the substance and tone of each of the contributor acknowledgements and/or dedications given therein.
- L. Preserve all the Invariant Sections of the Document, unaltered in their text and in their titles. Section numbers or the equivalent are not considered part of the section titles.
- M. Delete any section Entitled “Endorsements”. Such a section may not be included in the Modified Version.
- N. Do not retitle any existing section to be Entitled “Endorsements” or to conflict in title with any Invariant Section.
- O. Preserve any Warranty Disclaimers.

If the Modified Version includes new front-matter sections or appendices that qualify as Secondary Sections and contain no material copied from the Document, you may at your option designate some or all of these sections as invariant. To do this, add their titles to the list of Invariant Sections in the Modified Version's license notice. These titles must be distinct from any other section titles.

You may add a section Entitled "Endorsements", provided it contains nothing but endorsements of your Modified Version by various parties—for example, statements of peer review or that the text has been approved by an organization as the authoritative definition of a standard.

You may add a passage of up to five words as a Front-Cover Text, and a passage of up to 25 words as a Back-Cover Text, to the end of the list of Cover Texts in the Modified Version. Only one passage of Front-Cover Text and one of Back-Cover Text may be added by (or through arrangements made by) any one entity. If the Document already includes a cover text for the same cover, previously added by you or by arrangement made by the same entity you are acting on behalf of, you may not add another; but you may replace the old one, on explicit permission from the previous publisher that added the old one.

The author(s) and publisher(s) of the Document do not by this License give permission to use their names for publicity for or to assert or imply endorsement of any Modified Version.

5. COMBINING DOCUMENTS

You may combine the Document with other documents released under this License, under the terms defined in section 4 above for modified versions, provided that you include in the combination all of the Invariant Sections of all of the original documents, unmodified, and list them all as Invariant Sections of your combined work in its license notice, and that you preserve all their Warranty Disclaimers.

The combined work need only contain one copy of this License, and multiple identical Invariant Sections may be replaced with a single copy. If there are multiple Invariant Sections with the same name but different contents, make the title of each such section unique by adding at the end of it, in parentheses, the name of the original author or publisher of that section if known, or else a unique number. Make the same adjustment to the section titles in the list of Invariant Sections in the license notice of the combined work.

In the combination, you must combine any sections Entitled "History" in the various original documents, forming one section Entitled "History"; likewise combine any sections Entitled "Acknowledgements", and any sections Entitled "Dedications". You must delete all sections Entitled "Endorsements".

6. COLLECTIONS OF DOCUMENTS

You may make a collection consisting of the Document and other documents released under this License, and replace the individual copies of this License in the various documents with a single copy that is included in the collection, provided that you follow the rules of this License for verbatim copying of each of the documents in all other respects.

You may extract a single document from such a collection, and distribute it individually under this License, provided you insert a copy of this License into the extracted document, and follow this License in all other respects regarding verbatim copying of that document.

7. AGGREGATION WITH INDEPENDENT WORKS

A compilation of the Document or its derivatives with other separate and independent documents or works, in or on a volume of a storage or distribution medium, is called an "aggregate" if the copyright resulting from the compilation is not used to limit the legal rights of the compilation's users beyond what the individual works permit. When the Document is included in an aggregate, this License does not apply to the other works in the aggregate which are not themselves derivative works of the Document.

If the Cover Text requirement of section 3 is applicable to these copies of the Document, then if the Document is less than one half of the entire aggregate, the Document's Cover Texts may be placed on covers that bracket the Document within the aggregate, or the electronic equivalent of covers if the Document is in electronic form. Otherwise they must appear on printed covers that bracket the whole aggregate.

8. TRANSLATION

Translation is considered a kind of modification, so you may distribute translations of the Document under the terms of section 4. Replacing Invariant Sections with translations requires special permission from their copyright holders, but you may include translations of some or all Invariant Sections in addition to the original versions of these Invariant Sections. You may include a translation of this License, and all the license notices in the Document, and any Warranty Disclaimers, provided that you also include the original English version of this License and the original versions of those notices and disclaimers. In case of a disagreement between the translation and the original version of this License or a notice or disclaimer, the original version will prevail.

If a section in the Document is Entitled "Acknowledgements", "Dedications", or "History", the requirement (section 4) to Preserve its Title (section 1) will typically require changing the actual title.

9. TERMINATION

You may not copy, modify, sublicense, or distribute the Document except as expressly provided under this License. Any attempt otherwise to copy, modify, sublicense, or distribute it is void, and will automatically terminate your rights under this License.

However, if you cease all violation of this License, then your license from a particular copyright holder is reinstated (a) provisionally, unless and until the copyright holder explicitly and finally terminates your license, and (b) permanently, if the copyright holder fails to notify you of the violation by some reasonable means prior to 60 days after the cessation.

Moreover, your license from a particular copyright holder is reinstated permanently if the copyright holder notifies you of the violation by some reasonable means, this is the first time you have received notice of violation of this License (for any work) from that copyright holder, and you cure the violation prior to 30 days after your receipt of the notice.

Termination of your rights under this section does not terminate the licenses of parties who have received copies or rights from you under this License. If your rights have been terminated and not permanently reinstated, receipt of a copy of some or all of the same material does not give you any rights to use it.

10. FUTURE REVISIONS OF THIS LICENSE

The Free Software Foundation may publish new, revised versions of the GNU Free Documentation License from time to time. Such new versions will be similar in spirit to the present version, but may differ in detail to address new problems or concerns. See <http://www.gnu.org/copyleft/>.

Each version of the License is given a distinguishing version number. If the Document specifies that a particular numbered version of this License "or any later version" applies to it, you have the option of following the terms and conditions either of that specified version or of any later version that has been published (not as a draft) by the Free Software Foundation. If the Document does not specify a version number of this License, you may choose any version ever published (not as a draft) by the Free Software Foundation. If the Document specifies that a proxy can decide which future versions of this License can be used, that proxy's public statement of acceptance of a version permanently authorizes you to choose that version for the Document.

11. RELICENSING

"Massive Multiauthor Collaboration Site" (or "MMC Site") means any World Wide Web server that publishes copyrightable works and also provides prominent facilities for anybody to edit those works. A public wiki that anybody can edit is an example of such a server. A "Massive Multiauthor Collaboration" (or "MMC") contained in the site means any set of copyrightable works thus published on the MMC site.

"CC-BY-SA" means the Creative Commons Attribution-Share Alike 3.0 license published by Creative Commons Corporation, a not-for-profit corporation with a principal place of business in San Francisco, California, as well as future copyleft versions of that license published by that same organization.

"Incorporate" means to publish or republish a Document, in whole or in part, as part of another Document.

An MMC is "eligible for relicensing" if it is licensed under this License, and if all works that were first published under this License somewhere other than this MMC, and subsequently incorporated in whole or in part into the MMC, (1) had no cover texts or invariant sections, and (2) were thus incorporated prior to November 1, 2008.

The operator of an MMC Site may republish an MMC contained in the site under CC-BY-SA on the same site at any time before August 1, 2009, provided the MMC is eligible for relicensing.

ADDENDUM: How to use this License for your documents

To use this License in a document you have written, include a copy of the License in the document and put the following copyright and license notices just after the title page:

Copyright © YEAR YOUR NAME. Permission is granted to copy, distribute and/or modify this document under the terms of the GNU Free Documentation License, Version 1.3 or any later version published by the Free Software Foundation; with no Invariant Sections, no Front-Cover Texts, and no Back-Cover Texts. A copy of the license is included in the section entitled "GNU Free Documentation License".

If you have Invariant Sections, Front-Cover Texts and Back-Cover Texts, replace the "with ... Texts." line with this:

with the Invariant Sections being LIST THEIR TITLES, with the Front-Cover Texts being LIST, and with the Back-Cover Texts being LIST.

If you have Invariant Sections without Cover Texts, or some other combination of the three, merge those two alternatives to suit the situation.

If your document contains nontrivial examples of program code, we recommend releasing these examples in parallel under your choice of free software license, such as the GNU General Public License, to permit their use in free software.